

FIRST
EDITION

BEIRUT DESIGN FAIR

BIEL, HALL3

20/24
SEPTEMBER
2017

UNDER THE PATRONAGE OF

**MINISTER OF ECONOMY AND TRADE,
H.E. MR. RAED KHOURY**

MULTIPLE BEIRUT REDESIGNS

—

*by Guillaume Taslé d'Héliand, Founder & Fair Director
and Hala Moubarak, Co-founder & Head of Exhibitors Relations*



In Beirut, primal ways and ancestral modes of creation and communication come together. A singular alchemy is bound to be recreated, redesigned : that of the mind, that of the heart, that of the conceivable and the incredible. In Beirut, necessities are baffled, however the need for beauty remains intact. With a geostrategic position at the crossroads of Eastern and Western worlds, Beirut is the meeting point of countless designs. It has proven to be the irrefutable hub for multiple creations and creators. Beirut Design Fair came as a natural endeavor. It aims to participate, with all the pre-established forces and initiatives, in asserting the true position of this city. We design because we need to exist. Emotions evolve into stories and lead to communication. With time designs become layers : the emotional

heritage and testimony of human evolution. The emerging worldwide market of design is growing significantly. Demand and supply for design in Lebanon are greater than one could think.

This first edition of Beirut Design Fair has a renowned selection committee, numerous exhibitors, a slew of local up-coming and famous designers, including roundtables and workshops. Beirut Design Fair aims to serve as a catalyst in unravelling emerging and established talents. A fair that would help perpetrate and perpetuate rare know-hows and craftsmanships. A fair that would anchor a unique platform for designers, connoisseurs and collectors.

We are thankful for the unparalleled support of so many and are dedicated to building a growing and lasting nest called... Beirut Design Fair!

THE CONTENT —

*New creations, fresh ideas, unique and inspiring innovations
at the core of Beirut Design Fair.*

2	EDITORIAL
6	CREDITBANK
8	THE COMMITTEE
12	SCENOGRAPHY
14	CONFERENCES & ROUND TABLES
16	EXHIBITORS 2017
106	HOT SPOTS
120	FOUNDING PARTNER
122	FAIR SUPPORTERS
140	MEDIA PARTNERS
152	ACKNOWLEDGEMENTS
156	TEAM & INFORMATION
158	EDITION 2018
164	MAP & INDEX

THE DESIGN ECOSYSTEM

—

*by Tarek Khalifé,
Chairman - General Manager, Creditbank*



We all know how design is a delicate balance between form and function; how good design provides both, and brings forth innovation on both fronts but rarely do we discuss the economic and developmental values of progressive design.

In the last few decades, the world has put forth more innovation than all of humanity's previous history. We have gone through multiple industrial revolutions from the steam engine to electric production to digital technology; and now the 4th revolution of blending digital technology with industry. Throughout these changes one thing remains clear, the important value of innovation in furthering the appeal of a product to a consumer.

Our culture is an infusion of cultures past and present, and holds in abundance a creativity that manifests itself locally and abroad in markets that have assigned a premium reputation to Lebanese designers. On the other hand, the Lebanese workplace has no shortage of qualified craftsmen and workshops in a broad spectrum of

disciplines that enable our designers to produce and develop their original designs.

What is still lacking perhaps is structure in this ecosystem rich in resources, yet still acting as a grouping of individual efforts that could benefit greatly from better connections and interactivity. Better links between designer, craftsman and the customer will enrich all and provide opportunity to develop an economic model that spans international markets.

In addition to invaluable recent progress in the design arena in Lebanon from the establishment of new and dynamic galleries and designer associations; progressive maisons d'editions and design programs and events, Beirut Design Fair comes to enhance our presence on the global stage of design and add structure to great unharnessed power residing in our local talented designers; established names and emerging talents.

We welcome this first salon with great promise that it will develop and evolve into a regional event on global calendars across the world of design.

THE COMMITTEE —

Beirut Design Fair has assembled a Selection Committee whose members are attached to Lebanon either by origin or by affinity.



The selection committee for Beirut Design Fair reflects the event's position as a platform for fostering encounters and showcasing talent: one where rigor meets generosity, where diversity is celebrated in a cosmopolitan atmosphere, and where the promotion of creativity is rooted in an economic and cultural context. For its first edition, Beirut Design Fair has assembled an exceptional selection committee whose members are attached to Beirut and Lebanon either by origin or by affinity. The confluence of these recognized professionals from the worlds of design, interior design, architecture, luxury, museums and education offers multicultural expertise on a variety of topics centered around

the pursuit of beauty, meaning and relevance. Aline Asmar d'Amman (architect, interior designer and artistic director), India Mahdavi (architect, designer and interior designer), Marc Baroud (designer, director of the design department of the Lebanese Academy of Fine Arts), Marianne Brabant (from Modern and Contemporary Department of the Musée des Arts Décoratifs de Paris), and Mathias Orhel (founder of m-0 creative recruitment consultancy) will bring their expertise to the selection of exhibitors at Beirut Design Fair. The selection committee will also participate in the attribution of the Beirut Design Award for creativity and innovation during the salon that runs from 20-24 September 2017.



**ALINE ASMAR
D'AMMAN**

Architect, interior designer and creative director Aline Asmar d'Amman has long been committed to fostering links between culture and architecture. In 2011 Aline founded Culture in Architecture in Beirut and Paris, with the deep belief in the power of beauty to elevate the soul. Among her current projects are the art direction of Hotel de Crillon's interior design, a boutique hotel in London and private residences in Riyadh, Beirut, Lausanne and Paris.



**INDIA
MADHAVI**

Architect, designer and interior designer India Mahdavi is an essential name in contemporary international creation. From the Parisian studio that she established in 2000, India conceives and designs private residences in places such as Paris, London, New York, and Siwa in Egypt, alongside her hotel, restaurant and boutique projects. India's design objects, starting with the Bishop, have become icons of contemporary decorative art. Her rich, cosmopolitan, polychrome, and solar universe celebrates a nomadic culture.



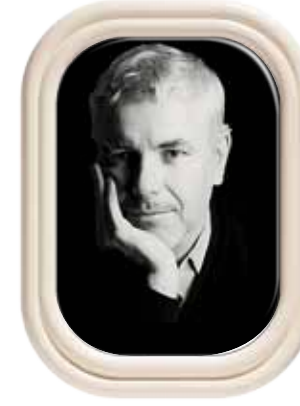
**MARC
BAROUD**

Operating between Beirut and Paris, Marc Baroud's creative activities as a designer and Director of the design department at the Lebanese Academy of Fine Arts (ALBA) stretch from experimental design to galleries, from architecture to teaching. His sole concern is to engage in collaborations and creative processes where empathy and intuition foster new ways of seeing, living, and thinking about space. For Marc, it's always just one step from conceptual to contextual!



**MARIANNE
BRABANT**

An university-trained art historian and a graduate in museology at the École du Louvre, Marianne Brabant has worked for twelve years at the Musée des Arts Décoratifs, a Parisian institution dedicated to design and the decorative arts. Part of the museum's Modern and Contemporary Department, Marianne is currently participating in an exhibition project dedicated to the design and creative scenes in Lebanon.

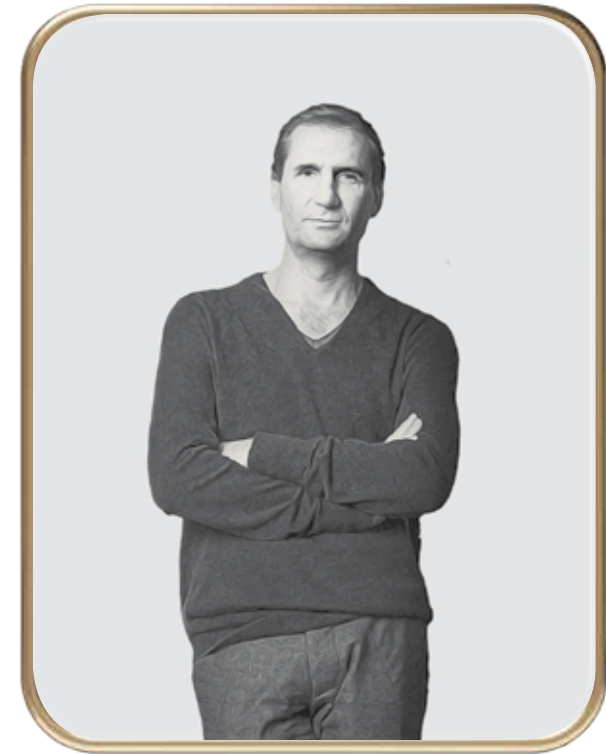


**MATHIAS
OHREL**

Mathias Ohrel supports brands in sectors with high creative added value (fashion, luxury, distribution, design, architecture, media, digital, and culture) by recruiting the personalities - and specifically creative personalities - that they need. Mathias keeps a constant eye on emerging talents, while his expertise, situated at the intersection of various disciplines, offers a unique look at the world of global design.

THE SET UP! —

Studio Adrien Gardère accompanies Beirut Design Fair to optimize the setting of the scenography.



Studio Adrien Gardère accompanies Beirut Design Fair to optimize the setting of the scenography. Adrien Gardère works throughout the world (France, Italy, United States of America, India, Egypt, Indonesia, Iran, China) creating a strong and relevant dialogue between traditional know-how and contemporary lifestyles. His work demonstrates a strong determination to find solutions in which innovation and comfort, intuitive understanding and emotion, scientific

expertise and educational value can coexist. While working on various projects, Adrien Gadère has demonstrated his adaptability to foreign countries and cultures and his ability to communicate effectively with craftsmen, business people, museum curators, scientists and experts. His professional approach has been met with global success in projects ranging from exhibition and museum design to furniture, lighting and product design.

TALK SHOWS

Expert speakers & designers...

21.09

4:00 to 5:15pm

FOR OPTIMAL RESULTS, APPLY THE MILANESE MODEL

What's the Milanese model? What's so special about it? And why if applied onto our economy and industry it would have a tremendous snowball effect of growth, sustainability and creativity?

SPEAKER:

MATTEO ORIGONI, ORIGONI STEINER

5:30 to 6:30pm

LEADING BY DESIGN

How is strategic design impacting and restructuring the way businesses and social communities operate today.

« Design is a completely new logic that is entering organizations, challenging the very core of the value they create and deliver such values for customers. It is therefore not surprising that a clear majority of organizations and NGOs are introducing design strategically within their businesses ».

SPEAKERS:

MARZIA ARICO, LIVEWORK*

JOE AYOUB, BRANDCELL - BUSINESS DESIGN + INNOVATION**

22.09

4:00 to 5:15pm

WHAT'S OLD IS NEW AGAIN

A thorough debate between two specialists of modern design that aims to redefine the popular conception of vintage design and shed light on the reasons behind the constant rising of its value on the international market.

« In a few years, a vintage piece will have more value than contemporary art ».

SPEAKERS:

GUILLAUME CUIRY, GALERIE NATIONALE DE DUBAI

PIERRE GHATTAS, GALERIE PIERRE GHATTAS

JEAN MARC LELOUCH, GALERIE JEAN MARC LELOUCH

This debate will be held in French.

5:30 to 6:45pm

MAISON TARAIZI: ON HISTORY, ADAPTATION AND MUTATION

How to adapt and transform an ancestral knowhow and craftsmanship with today's ever evolving visions and techniques? For the first time, architects and designers will gather around a round table to discuss the impact and evolution of artistry.

This round table will be followed by the book signing of Camille Tarazi « Vitrine de l'Orient ».

SPEAKERS:

CAMILLE TARAIZI, MAISON TARAIZI

ALINE ASMAR D'AMMAN, CULTURE IN ARCHITECTURE

RANA NASR, BLEU DESIGN

GALAL MAHMOUD, ARCHITECT

7:00 to 8:00pm

RENEWABLE SPACES: A DYNAMIC PLATFORM FOR COLLABORATIVE CREATIONS

Architect Karim Nader will unveil his titanic project that will take multi-disciplinary collaborations to new heights. « Sugar Lane », a dormant sugar factory about to be transformed into a creative wonderland, has the ambition of redefining Beirut as a creative and collaborative platform.

SPEAKER:

KARIM NADER, ARCHITECT

This conference will be followed by a talk between the architect and university students.

23.09

4:00 to 5:15pm

ITALIAN DESIGN: WHAT ELSE?

One cannot speak of design without referencing the Italian maestros and their continuous predominance in that field. What's today's role of Italy in the international design web and market? How does it still influence and impact the world of creation?

SPEAKER:

MATTEO ORIGONI, ORIGONI STEINER

6:00 to 7:00pm

BEIRUT : A HUB FOR INTERNATIONAL RESIDENCIES

By stimulating creativity through interaction with the local environment, artists and cultural institutions, the Beirut Art Residency (BAR) seeks to foster cross-cultural relations between participants and the local artistic community in Beirut. Joy Mardini will tell us more about BAR and unveil this year's international residents.

SPEAKER:

JOY MARDINI, JOY MARDINI GALLERY

24.09

4:00 to 6:00pm

BEIRUT DESIGNS, BEIRUT CONÇOIT...

An exciting round table, which will propose an outreach and education program entitled Beirut Designs. This type of program will be the first of its kind in the Arab world to look at design education in fresh multidisciplinary interactive forms, utilizing the best known methods of knowledge and cultural development.

SPEAKERS:

NADINE TOUMA, MADAR ONBOZ

HALA MOUBARAK, BEIRUT DESIGN FAIR

6:30 to 7:30pm

SPECIAL EVENT

Auction sale of 3D printed, limited edition chairs by designer Guillaume Credoz.

AUCTIONEER:

VALÉRIE ARCACHE AOUAD

*Livework is a global firm based in UK and the pioneer in service design.

**Brandcell is Livework partner in the Middle East and the first business design consultancy firm in the region



-

EXHIBITORS

2017

-

392RMEIL393

C6 |

Experimenting with materials has been an interest to us, whether that be fabric, glass, metal, resin or mud. For the past five years we have focused our energy on two materials in particular derived from earth, which we developed through mixing, molding and kneading. They can be used as architectural finishing and on useful objects such as bowls, lamps, stools, etc., both indoor and outdoor since they are water proof and fire resistant. In every project, we explore the potential of these materials, refining them throughout, and integrate our personal touch. This collection at Beirut Design Fair 2017 is a glimpse of possible forms, colors and textures, as well as opening a window for collaboration with designers architects and the public.

DIRECTOR

NELSY MASSOUD

-

Gouraud Street, next to Red Cross

Beirut

LEBANON

-

T + 961 1 567 015

-

gallery@392rmeil393.com

392rmeil393.com



ALBA

S11 |

The Lebanese Academy of Fine Arts, ALBA, was founded by Alexis Boutros in 1937. This visionary directed the school until Georges Haddad took the lead in 1979. For thirty years, Haddad developed new schools, sections and institutes under ALBA's roof. Since 2010, André Bekhazi is in charge of ALBA and its prosperous future. The Design Section was founded in 2012 within the Decorative Arts School. «The Design Section aims to edify future designers to evolve in the variety of design practices. Design professionals must meet the needs of the market, but most importantly meet the challenges of the future» certifies Marc Baroud, Director of the Design Section. ALBA is pleased to present, with Beirut Design Fair, four lightings designed by five first-year Design students: Maria Kahalé, Romy Chaoui, Serge Tchatalian, Rami Baaklini and Aya Melki mentored by 3 teachers, Kareen Andraos, Georges Mohasseb practicing designer and Joe Nacouzi, lighting designer. Committed, students have given meaning to all of their rich and creative projects.

DIRECTOR

MARC BAROUD

-

Sin El Fil, Beirut

LEBANON

-

T + 961 1 489 207

M + 6961 3 38 00 02

-

kandraos@alba.edu.lb

www.alba.edu.lb



ALBI

S2 |

The « Breek », designed for the Sursock Museum Store, derives from its ancestral Phoenician shape and brings together two of Lebanon's traditional craftsmanship techniques; glass blowing and stone carving. The carefully hand blown borosilicate glass piece sits on a carved Marble or Terrazzo base. The carafe is connected to its cooler via a laser cut, hand polished stainless steel ring, insuring no rusting or any wet slips. The union of these materials, the frail, the firm and the strong, is a tribute to our history from which the present rises. The « Breek » is an ALBI creation; a collaborative design platform bringing together four architects that searches for the alliance of past and future, Craftsmanship and Technology. ALBI's locally hand crafted and produced conceptions aspire to deliver functional, innovative and accessible design, while hoping to bring a sense of pleasure and simplicity into your everyday life. ALBI is also a play on words, for when pronounced it translates to the Arabic word **قلبي**, meaning « my heart ». Because home is where the heart is.

DIRECTORS

**MICHAEL NAJJAR, TRACEY EID,
KARL KARAM & MARIANNE SAFI**

-

Ashrafieh, Beirut

LEBANON

-

M + 96181252694

-

info@a-lb-i.com

www.albicreations.com



AMBIENTE BEYROUTH

D5 |

Parametric Art Collection is AMBIENTE's latest bid at defining the contemporary way of life. The concept fuses artistic designs and mathematically driven algorithmic precision, to bring about cutting edge furniture. The abstract forms find their place inside a modern lifestyle through their practicality and comfort. The sense of plasticity originating from the fluid and curvilinear shapes is paradoxically born from a mathematical design code, serving as the model's DNA core. These visually-sculpted art forms are a compilation of precise, sculpted units of wood with a high quality paint finish. Every piece, through its wide range of customizations, can seamlessly blend into any space, improving on the traditional and expanding on the modern. Whether it be in an art gallery or a home, Ovum offers a cozy nestling space. Spina Vertebra works ideally in lounges and professional environment.

DIRECTOR

RICHARD A. GERMANI

-

Fouad Chehab Street

AGBU Building

Sin El Fil, Beirut

LEBANON

-

M + 961 3 623 940

M + 961 3 829 142

-

ambientewoodfactory@gmail.com



ANASTASIA NYSTEN

S6 |

Born in Ottawa, Canada to a Lebanese Mother and a Finnish father, Anastasia Nysten grew up in Finland, France and Lebanon. She received her Masters degree in Industrial Design from ALBA (Academie Libanese des Beaux-Arts) in Beirut during which time she was working at Karen Chekerdjian design studio. After Graduation she moved to London to be part of Lighting designer Michael Anastassiades' team where she stayed over three years. As of 2015, Anastasia has been editor of Selections magazine in Dubai, UAE where she now lives and works. In a time when we are more drawn to getting our information and reading stories from screens rather than paper, we look a questioning the usability of the bookcase. The functionality of this object has changed, replacing the book space with objects and memorabilia. For the Beirut Design Fair, Nysten reflects on this action.

DIRECTOR

ANASTASIA NYSTEN

-

Beirut

LEBANON

-

T + 971 50 273 4627 (UAE)

M + 961 3 798 790

-

anastasia.nysten@gmail.com

www.anastasianysten.com



ARCHITECTURE & MÉCANISMES

S17 |

Céline earned her Bachelor degree in Architecture from the American University of Beirut in 2008. Her final year project was granted the Dean's award for Creative Achievement. She took part in various internships in Beirut, Paris and New York City between 2005 and 2007. Following her studies, she worked at DW5/Bernard Khoury Architects for five years (2008-2013) where she followed the different phases of projects. She has since been working independently on various architecture and design projects she has dubbed « Mécanismes ». Her sister Tatiana, joined ARCHITECTURE & MÉCANISMES in September 2014 after earning her Master's degree in Architecture from the Académie Libanaise des Beaux Arts (ALBA), where she graduated with distinction. Their vision about product design is characterized by radical, rough, structured and well detailed elements getting together to form small scale units. Their concepts are always inspired from the context in which they are building, and hence Beirut and its chaos have surely injected fuel into their creations.

DIRECTOR

**CÉLINE STEPHAN
& TATIANA STEPHAN**

-

Beirut

LEBANON

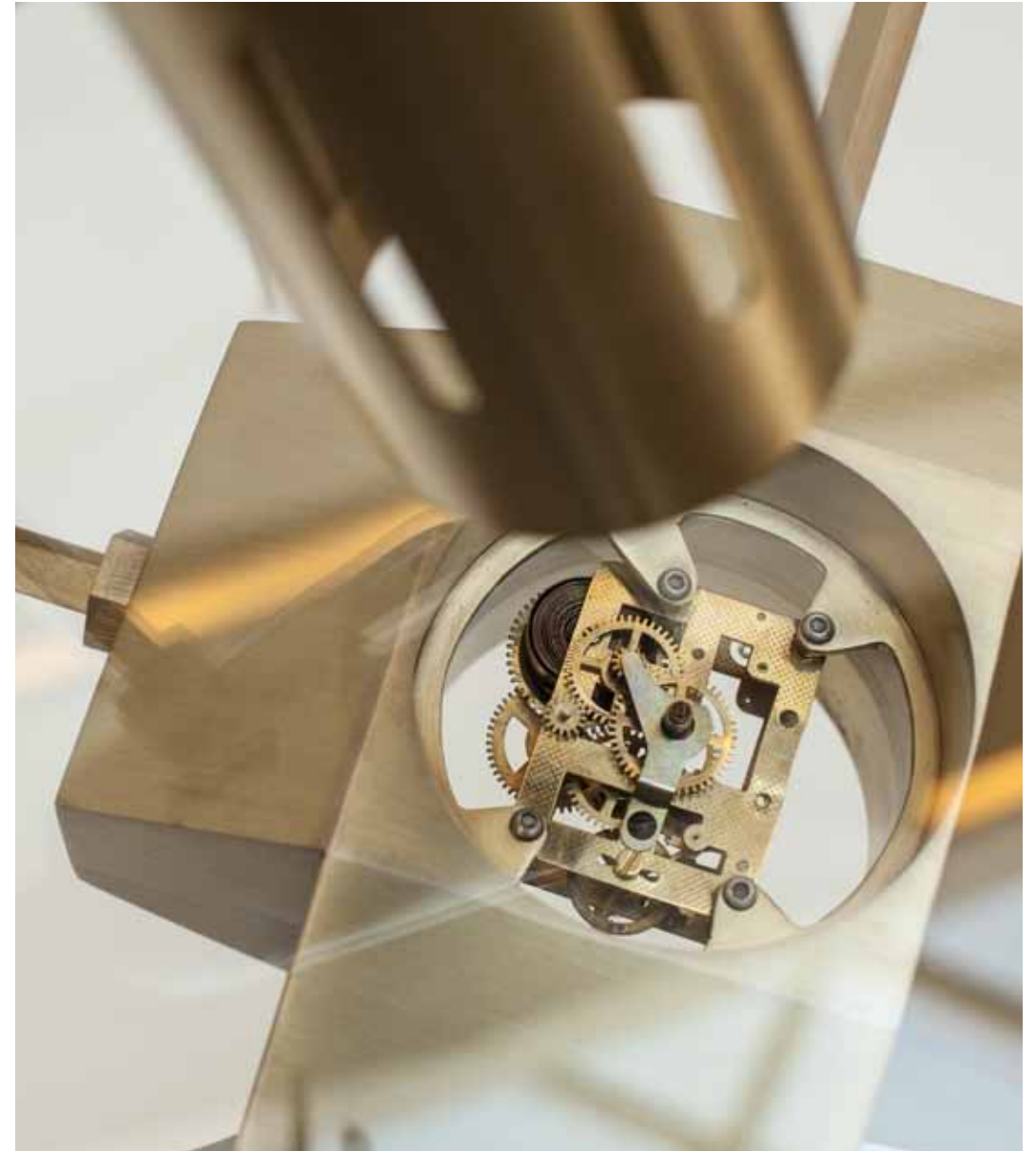
-

M + 961 3 661 738

-

celine@architecture-mecanismes.com

www.architecture-mecanismes.com



ARDECO

D13 |

Since 1998, ARDECO is Beirut's first gallery specializing in European 20th century furniture, lighting and decorative objects. In their 500 m² showroom you will find a mix of original furniture, lighting and eclectic accessories, from the 20's through the 80's. These authentic, vintage and antique pieces are carefully hand-picked from Europe, either in original condition or restored by highly skilled craftsmen. ARDECO is also the exclusive distributor to high-end designer brands that have a historic notion such as Memphis Milano, Hugues Chevalier Paris, Overgaard & Dyrman, Fredericia, Zieta, Collection Particulière, Steiner Paris and Georges Amatoury Studio. While walking through the two neighboring galleries on Trabaud Street, you will experiment a Design journey through the 20th and 21st century.

DIRECTOR

GEORGES AMATOURY & ELSIE SIKIAS

-

Trabaud street

Ashrafieh, Beirut

LEBANON

-

T + 961 1 338 785

F + 961 1 338 795

-

info@ardeco.org

www.ardeco.org



BEIRUT MAKERS

D11 |

BEIRUT MAKERS is an open collective of designers exploring the role of digital technology in the continuous advancement of design, simulation and fabrication. Makers are a new breed of craftsmen / designers / coders which both design and manufacture. Powered by the ubiquity of digital computing and information-driven fabrication technologies, makers operate on the frontiers of democratizing design, sharing knowledge and building public awareness about sustainability and new materials. Ever since its establishment in 2014, and with the support of Credit Bank and Beirut Design Week, BEIRUT MAKERS showcases their work twice-a-year in public exhibitions featuring a variety of open-ended notational systems, digital codes, file-to-factory techniques, self-styled gigantic 3D printing machines, innovative laser-cutting tactics, new materials, and above all, design objects and design systems that subvert the ways things are designed, made and perceived. Members of the collective are: Karim Chaya, Kamal Aoun, Stephanie Bachir, Marianne Ghreyche, Stephanie Korab, Ahmad Khouja, Guillaume Credo, Charbel Jreijiri, Adham Selim, Touffic Matta and Hadil Ankouny.

DIRECTOR

GUILLAUME CREDOZ

-

Mkalles Industrial City

Beirut

LEBANON

-

T + 961 1 695 517

-

info@beirutmakers.com

www.beirutmakers.com



BOISSELIERS DU RIF

D6 |

Our story begins a little over 100 years ago, amidst the uncertainty of the First World War. Having discovered a deep respect for wood and a love for craftsmanship, Hanna El Rif, opens his first workshop. Years later, his son Joseph, sharing his father's passion for the craft, expands this workshop into the large family of Boisseliers we are today. For three generations now, we have strived to uphold the craft and its traditions by melding classic technique with state-of-the-art innovation, and always channeling our passion in pursuit of perfection. Through our mastery of artisanal techniques, we have customized and developed a diverse body of work ranging from furniture and heirloom gifts, to complete woodwork refurbishments. As we continue to grow, our core values remain unchanged - as they have been over a century. Through experience, unsurpassed craftsmanship and exemplary service, we are committed to preserving the craft, keeping it relevant today and for generations to come.

DIRECTOR

JEAN-MARC RIF

-

Dora Sea Side Road

Rif Building

Beirut

LEBANON

-

T + 961 1 241 727

T + 961 1 241 728

T + 961 1 241 729

-

info@boisseliersdurif.com

www.boisseliersdurif.com



BRUT

S10 |

Even a brick wants to be something. Behind every astonishing, creative, original idea, there's a planned, organized, and a well-structured team of dedicated designers. Between design and tradition, audacity and wisdom, BRUT concrete products take shape according to your desires and bring beauty and serenity to your space. BRUT invents simple and timeless forms, which becomes the source of inspiration, emotion and decoration. BRUT works with you and for you to reinvent concrete as a decorative material. BRUT is the process of adding texture, colors but most importantly innovative shapes to the basic items of your interior, giving them a unique touch of modern art. Concrete then becomes the ultimate material that substitutes other natural products while preserving their soothing aesthetic aspects. With BRUT you will discover a limitless world of design, creativity and innovation.

DIRECTOR

RAMI A. MATAR

-

General Fouad Chehab Street

Far Vision Center - 4th floor

Sin El Fil, Beirut

LEBANON

-

T + 961 1 483 426

M + 61 3 756 851

-

brut@brutdesign.com

www.brutdesign.com



CARWAN GALLERY

C2 |

CARWAN GALLERY is committed to nurturing, producing and promoting design in the Middle East and beyond. The gallery employs a comprehensive design approach via the plurality of its cross-cultural collaborations, between architects, artists and designers alike. Thus prompting a vital and rich exchange of ideas, influences, stylistic elements and know-how. The «Beirut Heavy Light» by Lindsey Adelman is the gallery's latest commission, presented exclusively at the Beirut Design Fair. Lindsey extends the concept of the «Heavy Light» to Beirut and the Middle East, embodying the nuances of Lebanese architecture and incorporating the native concrete block in a new collection of Limited Edition lighting objects.

DIRECTORS

NICOLAS BELLAVANCE-LECOMPTÉ
& PASCALE WAKIM

-

Seaside Road

D-Beirut Building - 1st floor

Burj Hammoud, Beirut

LEBANON

-

M + 961 3 686 089

-

info@carwangallery.com

www.carwangallery.com



D-TAB

C8 |

D-TAB is an interior architecture firm, established in 2004. Since then, the team of architects & designers has developed their expertise to provide the best of details & finishes in every single outcome. In year 2012, the furniture department took place in D-TAB offices. Following BeInspired, SLANG is the second collection. Speaking street language, it reveals street art & pop-up designs embracing the movement of contemporary urban art with a special twist in shapes and contents. All skates types are to be used as tables, shelves, trays, hanging art pieces, as well as trendy coasters. In collaboration with many artists & photographers, «Shoot for the moon» was first on the list with limited edition items. Other art-makers are next in line...

DIRECTOR

DIANA TABBARA

-

Concorde Center

Verdun, Beirut

LEBANON

-

T + 961 1 754 054

M + 961 71 512 972

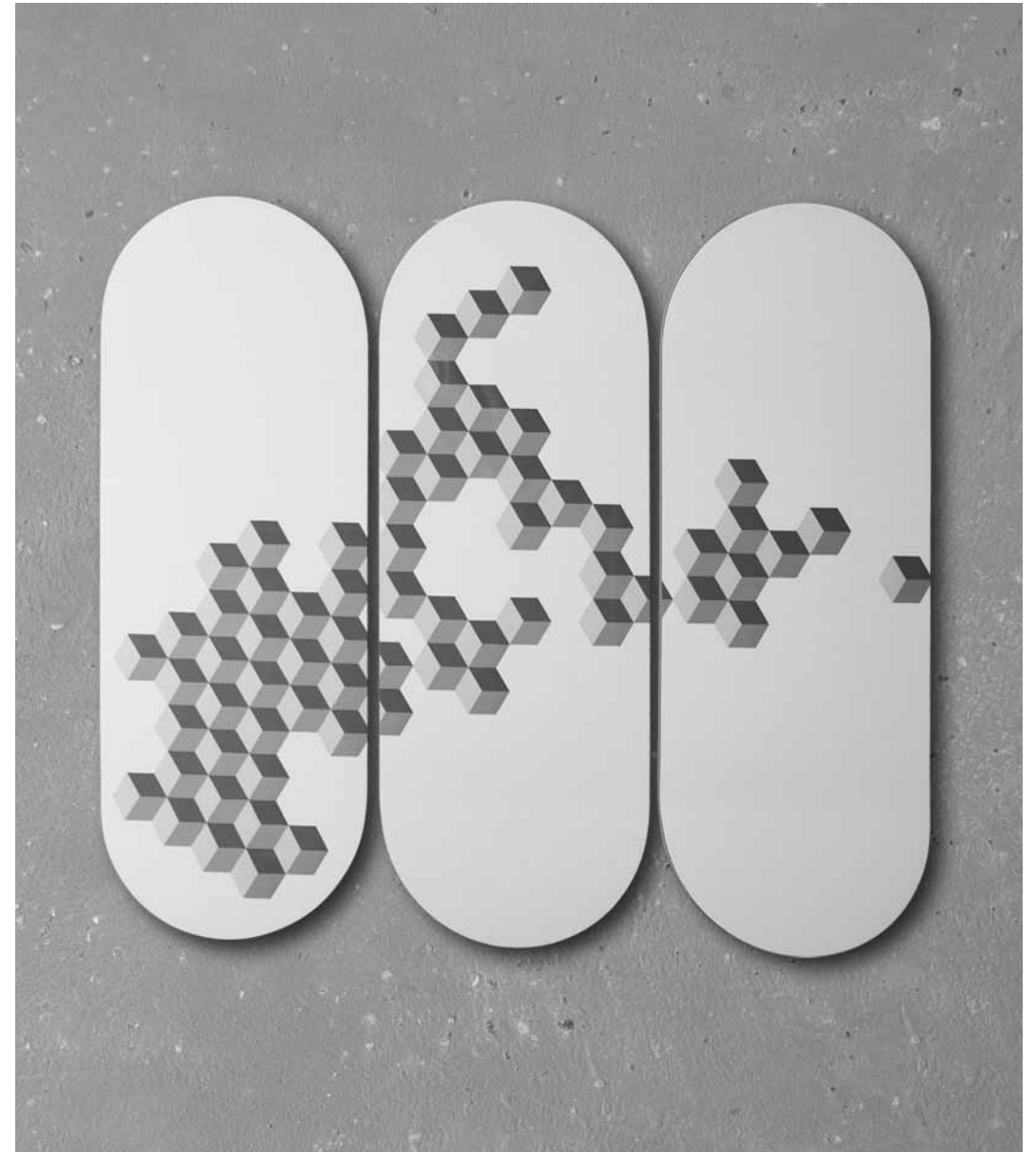
F + 961 1 354 054

-

info@d-tab.com

www.slangonlinestore.com

www.d-tab.com



DAMJ DESIGN

S13 |

Ahmad Khouja's designs draw inspiration from mathematics and nature as the basis for what is often a geometric game driving each piece. His process is informed by his background in architecture and fabrication. After returning from the US, Ahmad set up his own atelier, DAMJ DESIGN + CRAFT, where he conceives and fabricates his works. It is in this workshop where he is constantly experimenting with new and old techniques, and at times re-contextualizing and re-interpreting traditional crafts. In addition to architecture and furniture Ahmad has also worked in lighting, producing a number of original series for himself and other designers in Beirut. He has worked in the US, UK and Lebanon, is a graduate of Columbia and UC Berkeley Universities, and has taught design and parametric modeling at LAU and AUB.

DIRECTOR

AHMAD KHOUJA

-

Gouraud Street

Beirut

LEBANON

-

T + 961 71 376 475

T + 961 71 962 882

-

ahmadk@damjdesign.com

www.damjdesign.com



DECO-AID

S24 |

DECO-AID is a furniture and product design studio based in Lebanon since 2012. They design and make contemporary hand-crafted furniture, their products have both an enduring design and are sufficiently well-made, thus enjoying simple minimalist forms that transcends trends. DECO-AID furniture is handmade in Lebanon by the finest lebanese craftsmen. Material longevity, selection and attention to detail are essential in meeting the standard required for our design. DECO-AID have released five pieces of furniture in vibes collection that combine affinity for minimalist design and use of natural materials. The pieces, which are made from maple solid wood and red copper, include a media sideboard, coffee table, buffet, buffet warmer, and a console table.

HEAD

ROULA GEITANI

-

Saed Frayha street

El Khoury building, 6 floor

Hazmieh

LEBANON

-

T + 961 5 953432

-

rs@deco-aid.com

www.deco-aid.com



ELIEMETNI

S1 |

Elie Metni, Architect and Designer, graduated from ALBA where he was also a part time instructor. In 2012 he joined Herzog and de Meuron, a renowned architecture firm in Switzerland where he participated in the design process of various projects. Selected by the Starch Foundation in 2015 to design their Boutique, his project was granted the iF Design Award 2017. He participated in several exhibitions in Beirut, Paris, London, Venice and Milano where he showcased some of his products. In 2016 he founded his studio ELIEMETNI in Beirut, covering Architecture, Interior and Product design. Among his current projects are the Dent De Lait an Eco Children's Center in Beirut, the interiors of private residences and other public projects. Elie constantly explores the projects' conceptualization by experimenting with materials and ergonomics. He believes that a project does not end at the completion of its construction but continues as the user starts interacting with the product.

DIRECTOR

ELIE METNI

-

Badaro, Beirut

LEBANON

-

M + 961 3 633 124

-

elie@eliemetni.com

www.eliemetni.com



FABRACA STUDIOS

S22 |

Specialists in custom commissions and combining exceptional craftsmanship with contemporary design, FABRACA STUDIOS, Samer Saadeh offer their clients a true bespoke service. Through its use of noble materials and fine engineering techniques FABRACA STUDIOS is a design-led business for commissioned lighting and furniture pieces where art, craft and design meet. Synergising architectural techniques with their finely-tuned aesthetics, they're constantly developing and exploring manufacturing processes - each item is hand-made and finished using the latest hand-finishing methods. Located at the heart of Bauchrieh's industrial city, FABRACA STUDIOS is at the center of an exchange between the area's artisans and craftsmen. They are matching their own contemporary aesthetic with their skills and creating unique products that represent a revival of the city's design and manufacturing philosophy. A fusion of innovative design and superlative manufacturing techniques.

DIRECTOR

SAMER SAADEH

-

Obeid building - 3rd floor

Industrial City

Bauchrieh, Metn

LEBANON

-

M + 961 3 917 501

-

info@fabracastudios.com

www.fabracastudios.com



FADI SARIEDDINE DESIGN STUDIO

C5 |

FADI SARIEDDINE DESIGN STUDIO is a multidisciplinary atelier. Saredidine on the one hand examines the use of unconventional materials by taking them out of their natural setting and applying them as a new medium thus giving them a new identity. On the other, he cleverly lends functions and compartments to an otherwise basic object. The collection, called SMLXL, are limited edition pieces that are all based on the same geometry, but vary in size while pushing the boundaries of transformation and user-object interaction.

DIRECTOR

FADI SARIEDDINE

-

Studio 105 - Building 8

Dubai Design District

393149 Dubai

UAE

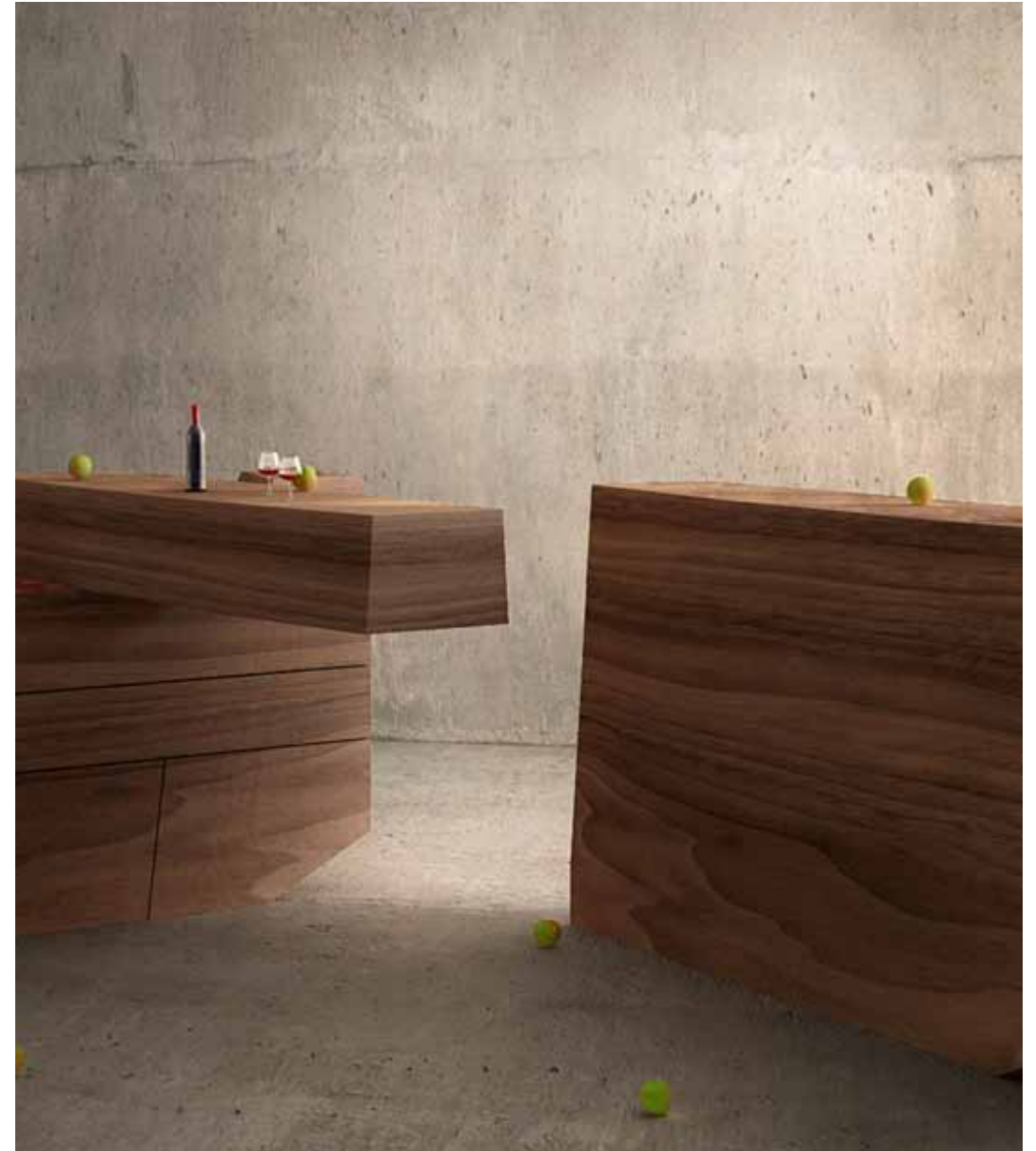
-

M + 971 50 847 45 81

-

fadi@fadisarieddine.com

www.fadisarieddine.com



FARES HABER/FRS

S12 |

Fusion of contrasts is what defines Fares' approach to Interior Architecture and Design. His creations are the result of a unique and elegant blend of shapes : Linear, curved and parametric. The «Articulation» Design collection is what typically reflects this approach, as being a concept inspired by human body articulated parts in their lines, curves and kinetic shapes. Refined into elements with a unique scale and very specific function, «Artihand» floor lamps and candleholders are the first items of this collection; a hand shaped items with adjustable / articulating parts offering a variety of shapes in one single element. A perfect combination of three main qualities : geometry, uniqueness and practicality.

FOUNDER

FARES HABER

-

Beirut

LEBANON

-

M + 961 3 417 345

-

info@fareshaber.com

www.fareshaber.com



GALERIE PIERRE GHATTAS

D4 |

Designers Jean Prouvé, Paul Evans, Raymond Loewy, Philippe Huiquilly and others amongst a slew of Americans and Europeans artists have found an exceptional haven in the heart of Ashrafieh (Beirut). Created in 1998, GALLERY PIERRE GHATTAS has been collecting and presenting art and design pieces from the 1930's till our times, and has forged an undisputed reputation for its diverse, rare and high end pieces. In true archaeologist of design, Dr Pierre Ghattas is always on the quest for new discoveries, establishing his gallery as a reference for art and design collectors in Lebanon. Lamps, paintings, furniture communicate in a 3 floors space of 600 m² under one denominator : quality and value. So if you're in Beirut and in the nearabouts of Ashrafieh, Gallery Pierre Ghattas is the place to discover.

DIRECTOR

Dr PIERRE GHATTAS

-

B4 - B6 Sodeco Street

Ashrafieh, Beirut

LEBANON

-

T + 961 1 615 231

M + 961 3 340 225

-

www.galeriepierreghattas.com



HAWINI

D17 |

Since its creation in 2010, HAWINI has been a multidisciplinary studio, brewing and exchanging new ideas and collaborations. And for the first time ever HAWINI is shedding light on the work of one of its founders, Wissam Moubarak, an architect, designer and photographer. For this new body of work Moubarak drew inspiration from dilapidated cities, with a particular aim on defending their cultural heritage and History. Old houses skeletons were reconceived as low tables an imaginary cities were sketched from the vivid and childhood infused imagination of the artist. Moubarak combined materials, while keeping an astute attention to « Handmade creations », is giving us some food for thought with his new installation. When traditional houses vanish, what will remain of our collective memory?

DIRECTORS

**NISRINE NASR, HAYTHAM HREIZ
& WISSAM MOUBARAK**

-

Kassatly Building

Sin El Fil, Beirut

LEBANON

-

T + 961 1 493 541

M + 961 3 961 347

-

contact@hawini.xyz

www.hawini.xyz



HICHAM GHANDOUR

C3 |

Hicham Ghandour is a Lebanese furniture designer based in Beirut. Before starting furniture design 12 years ago, Hicham had his own company in New York City restoring gilded furniture and gilding contemporary furniture. Ghandour's work is contemporary with a modest reminiscence to the past. His designs are shaped with an impeccable technique and molded with noble materials such as bronze, rock crystal and Lapiz Lazuli with a strong sculptural presence. Most of Hicham's pieces are one of a kind or limited editions.

DIRECTOR

HICHAM GHANDOUR

-

Saifi, Beirut

LEBANON

-

M + 961 3 772 355

-

hicham@hichamghandour.com

www.hichamghandour.com



IWAN MAKTABI

D16 |

IWAN MAKTABI - The 3rd generation - is a carpet gallery specialized in fine antique, modern and decorative, high quality hand made carpets. Deeply rooted in the carpet industry since 1926, IWAN MAKTABI's name has become synonymous with high end carpets, and continued the family tradition and its commitment to quality, and creativity. Hence the gallery's reputation of market leaders in both antique and contemporary design carpets. IWAN MAKTABI's Flagship store in Beirut occupies 4 floors in Ashrafieh. The space is conceived to give each carpet collection (modern, traditional, antiques) its own well deserved space. Through collaborations with artists & designers, IWAN MAKTABI represents in the Middle East many stellar names of designers, such as: Jan Kath, Hossein Rezvani, Luke Irwin,... IWAN MAKTABI is unveiling for Beirut design Fair, the Mosaic Collection by Lucke Irwin.

DIRECTOR

MOHAMED MAKTABI

-

Charles Malek Avenue

Quantum Tower

Ashrafieh, Beirut

LEBANON

-

T + 961 1 336 301

F + 961 1 336 225

-

info@iwanmaktabi.com

www.iwanmaktabi.com



JOY MARDINI DESIGN GALLERY

C1 |

Since 2011, JOY MARDINI DESIGN GALLERY has been developing proficiency in collectable, customizable and modular product design. Located in the heart of Gemmayze, the showroom includes an extensive line-up of emerging and established names in the Lebanese design scene. Having been a defender of Lebanese design, Joy Mardini, director of the gallery, has found that good design is born out of a thorough understanding of materials, craftsmanship and purpose paired together with sound aesthetic sensibilities. The gallery will present a curated booth of three contemporary designers, Carla Baz, Charles Kalpakian and david / nicolas, focusing on the intriguing universe that inspires and drives their creative process. Each one encompasses different values, backgrounds and narratives that are weaved together in their designs. The show encourages a closer scrutiny of their journey from inspiration to object, placing great significance on their ingenuity as well as the purely visual aesthetics.

DIRECTOR

Joy MARDINI

-

406 Gouraud street

Gemmayze, Beirut

LEBANON

-

T + 961 1 443 263

M + 961 81 758 556

-

hi@jmdesigngallery.com

www.jmdesigngallery.com



KARINA SUKAR STORE

D1 |

Karina Sukar is a Lebanese Interior Architect and Designer who juggles both talents with equal enthusiasm. She often brings together both skills, harmoniously combining creative and functional aspects. Karina has a passion for turning the plain into aesthetic and for redesigning vintage objects, mixing materials and finishes in the process and finding inspiration everywhere. Geometrical shapes become a cabinet, rain drops on a pond are a cluster of tables, construction rebars become a wine bar, venetian blinds turn into a lounging chair and Mondrian's composition becomes a mirror... All «proudly made in Lebanon». Karina «Believes in creating objects with sense-appeal. An object must speak to us». Applying this concept to interior architecture, she goes, «Our living environment acts upon us. We need to choose how». You should not only look forward to being in your living space, but also be part of it. Her inspiration while bringing mind to pen is summarized by her motto, «Art Works».

OWNER & MANAGER

KARINA SUKAR

-

Arz Street

Lady Cochrane building

Gemmayze, Beirut

LEBANON

-

T + 961 1 567 678

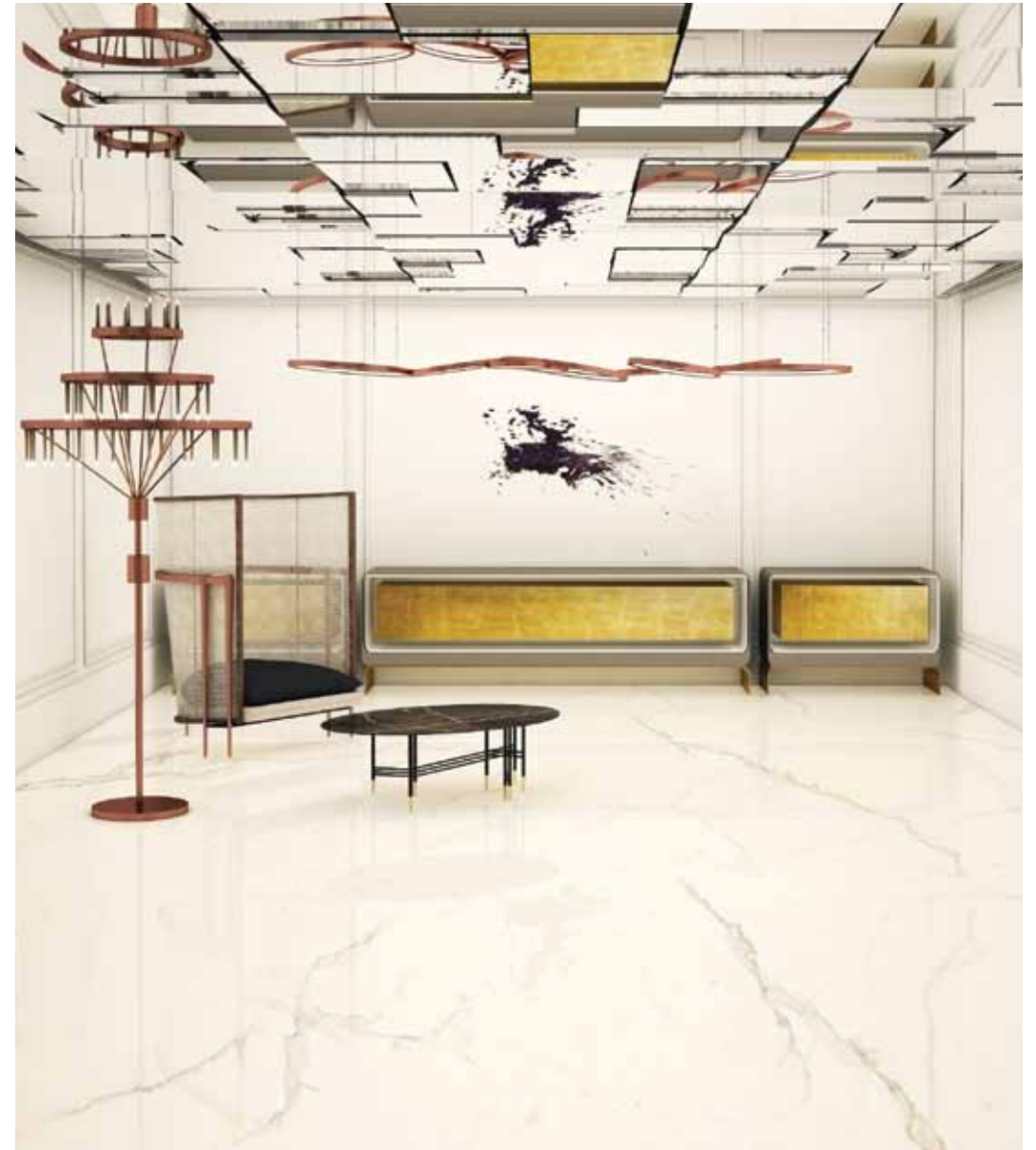
T + 961 1 577 677

M + 961 3 788 678

-

info@karinasukar.com

www.karinasukar.com



MAD ARCHITECTURE & DESIGN

S23 |

MAD is an architecture & design firm founded by Anthony and Marie-Lyne Daher. Its focus is creating sustainable and ecological designs, while maintaining key elements of Lebanese heritage. Since its establishment in Amchit in 2012, MAD has carried out various construction, landscape and interior design projects, aimed at promoting the integration of classic Lebanese character and contemporary concepts. Their latest project is a new take on the traditional Lebanese stove; Stouff's modern design presents an energy efficient performance, engineered to maximize heating power output while minimizing wood consumption. Stouff's versatility allows it to be connected to your home's central heating system, while maintaining tribute to its traditional roots by featuring a special cooking compartment.

DIRECTOR

MARIE-LYNE & ANTHONY DAHER

-

Army square

Lahoud Building - 2nd floor

Amchit

LEBANON

-

M + 961 3 117 013

M + 961 3 987 495

-

marie_lyne@madarchitecture.co

anthony@madarchitecture.co

www.madarchitecture.co

www.stouffdesign.com



MAISON TARAIZI

CO |

Established in 1862, MAISON TARAIZI combines a legacy of authentic craftsmanship with innovative techniques. Their creative lab of experts is a constantly evolving think tank. They can advise you on overall solutions as well as produce the most meticulous work. Whether your heart sets on an original or contemporary style, designs are tailor-made to your wants and needs. Their comprehensive propositions covers creation, customization, restauration, interior decoration, lighting and furniture. Camille M. Tarazi will be present for his book signing « Vitrine de l'Orient ».

DIRECTORS

MICHEL E. TARAIZI
& CAMILLE M. TARAIZI

-

119 Pharaon Street - Mar Mikhael

P.O. Box 11-3647

Ashrafieh, Beirut

LEBANON

-

Rizk Plaza

Broumana

LEBANON

-

T + 961 1 568288

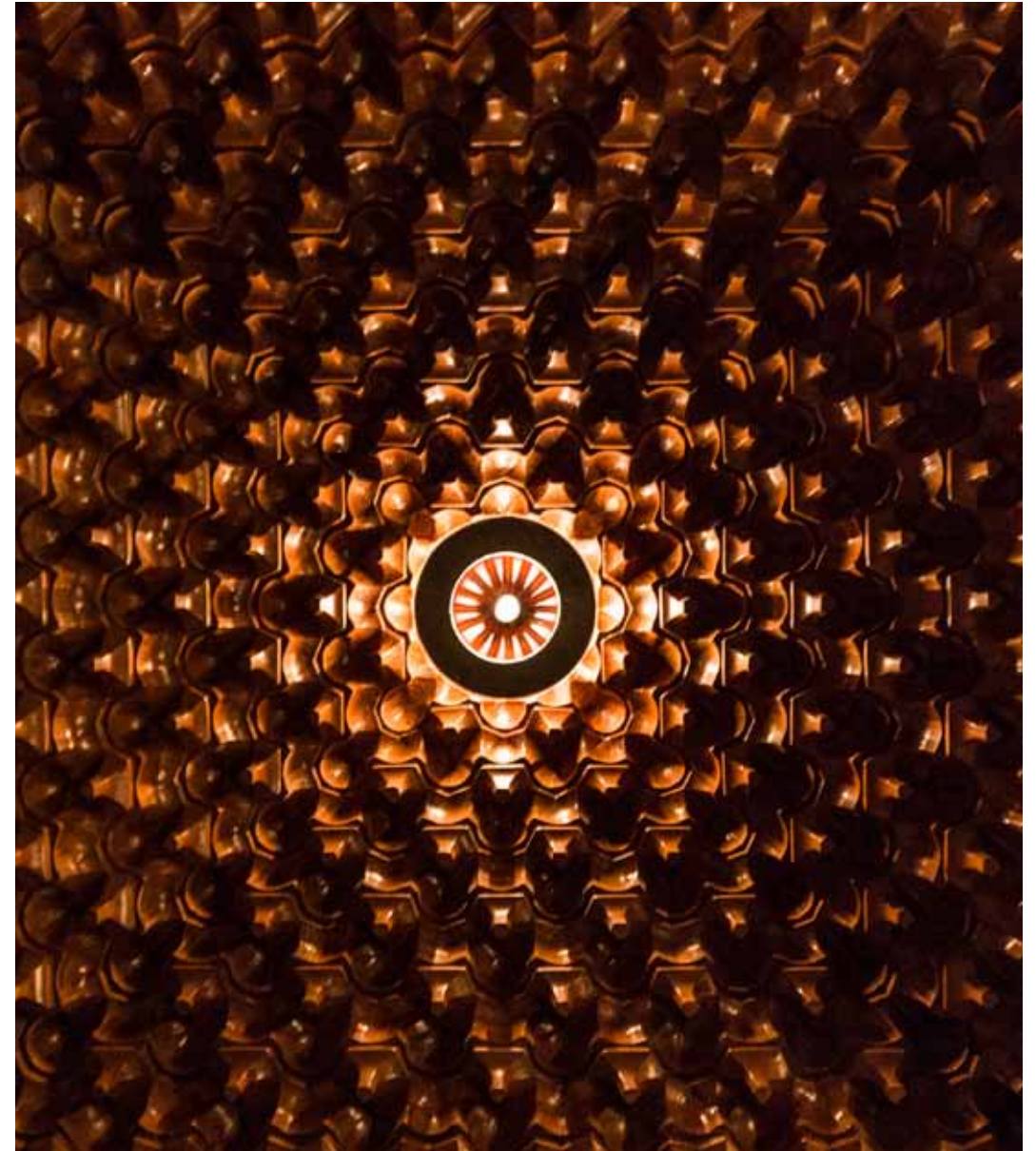
T + 961 4 862194

F + 961 4 964288

-

info@maisontarazi.com

www.maisontarazi.com



MARIE MUNIER

D3 |

The world of creation has no boundaries and Marie Munier certainly exemplifies the notion. A journey that began with expression through painting, then led to a road captured by the allure of antiquity. This would tempt Marie Munier away from her brushes and toward the world of jewels, creating unique statement jewelry. Over the past four decades Marie's most passionate form of expression has continued to be her jewelry, but today a new passion has emerged. Thus she was drawn to explore graphical motifs reminiscent of her jewels on a larger scale, creating lighting sculptures for stylish homes.

DIRECTOR

NATHALIE MUNIER

-

St Nicolas Street

Rizk building - Ground floor

Ashrafieh, Beirut

LEBANON

-

T + 961 01 326 738

M + 6 63 22 22 45

F + 6 63 22 22 45

-

info@mariemunier.com

www.mariemunier.com



MARINE BUSTROS

S19 |

Marine Bustros is a young Lebanese interior and furniture designer with a poetic style and a will to create sculptural yet functional design. After studying interior design at the Lebanese Academy of Fine Arts, she pursued a Master Degree at the Scuola Politecnica di Design in Milan. She then undertook internships with international architecture and design firms such as Lombardini 22 and Sawaya & Moroni in Milan. Upon her return to her home town, she worked as an interior designer at Gatserelia Design. Working across interior and product design, Marine is now founding her practice. Her recent projects include exhibition design for Sursock Museum, La Brocante des Artistes and presently Beirut Design Fair. Known for her detailed approach to the crafting of metal products, she combines traditional techniques with innovating materials as semi-precious stone or simple metal mesh to create unique pieces and individualization in design for some pieces that will stay uncopied.

DIRECTOR

MARINE BUSTROS

-

Beirut

LEBANON

-

M + 961 3 777 473

-

marine.bustros@gmail.com

www.marinebustros.com



NADA RIZK

S18 |

Nada Rizk is a Lebanese Finnish artist working mainly in ceramics and bronze. She holds a Master degree in Political Sciences and International Relations from the London school of Economics (LSE) and a degree in Arts from the Académie Libanaise des Beaux Arts (ALBA). Her hand built sculptures grow from a multitude of images in the natural and the imaginary worlds. «Bloom» is a series of 15 tall ceramic sculpture vessels with hundreds of hand built flowers and organic elements all in bloom as if frozen in time. Each sculpture is unique. The accumulation of hundreds of flowers and organic elements side by side convey a feeling of opulence, sensuality and communicate a sense of power. It aims at redefining our relationship with nature and the environment in which we are living. Nada's ceramic sculptures have been exhibited in Lebanon and abroad and sought after by private collectors.

DIRECTOR

NADA RIZK

-

Beirut

LEBANON

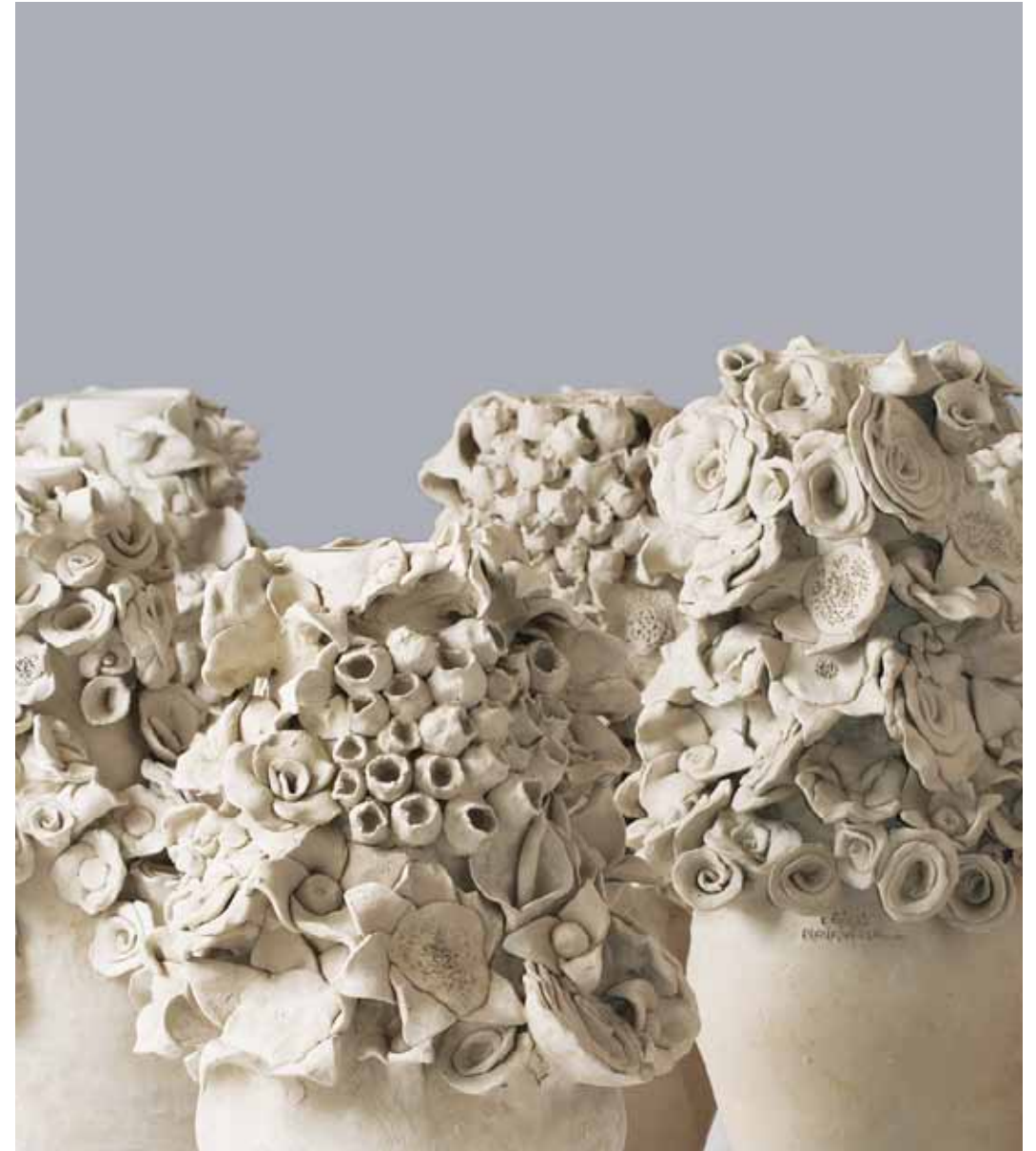
-

M + 961 3 653 293

-

nada.rizk@ yahoo.com

instagram@nada.rizk_ceramics_sculpture



NAMIKA ATELIER

C4 |

NAMIKA ATELIER is a pottery studio founded in 2012 by Hala Matta. It is a collaborative platform that showcases works by the founder Hala Matta and artists such as Katya Traboulsi, Vivian Van Blerk, Theodoris Galigalidis and others. The pottery studio defends craftsmanship and promotes ceramics as a mainstream artistic medium. For this edition of Beirut Design Fair Namika Atelier booth will be presenting ceramic tables by Katya Traboulsi, zoomorphic urns and pots by Vivian Van Blerk, pots by Hala Matta inspired by the sea and raku / naked raku vases by Theodoris Galigalidis.

NAMIKA ATELIER will be donating a percentage of the sales during the Beirut Design Fair to Balsam the Lebanese center of Palliative care.

DIRECTOR

HALA MATTA

-

Beirut

LEBANON

-

M + 961 3 775 313

-

mattahala@hotmail.com

instagram@Namika_atelier



OPUS MAGNUM GALLERY

S9 |

Claudia Chahine is a French-Lebanese interior designer who started creating furniture since 2005. She likes to give to her work a strong artistic vision. She is always eager to put craftsmanship right at the heart of insightful furniture pieces. Gilbert Debs is a mix between an artist, alchemist and a philosopher. He is on a perpetual quest to discover new combinations of materials, contesting their ordinary properties and ways of reacting. At OPUS MAGNUM GALLERY they both like to play with their invented textures and touch new boundaries. Their latest in 2017 is a surface combining traditional local blown glass to their unique process of casting metals. The result is a glowing hard surface that they use to create sculptured artistic yet functional pieces.

DIRECTOR

GILBERT DEBS

-

Centre Noura - 5th floor

Sin El Fil, Beirut

LEBANON

-

T + 961 1 254 930

M + 961 3 320 494

-

info@opusmagnumgallery.com

opusmagnumgallery.com



PAOLA SAKR

S20 |

In Beirut, you constantly get lost in a city that is mired in endless transformations and re-inventions, forever belonging to an era of transition. Beirut's cityscape is an arrangement of miscellaneous architecture and broken neighborhoods, always reminding us of its destructive nature. Impermanence is a series of vases made of abandoned pieces and material scraps. It represents our attachment to what is ephemeral. This collection is a reminder that everything around us is in perpetual metamorphosis and subject to decay and destruction. A reminder that nothing is permanent but change. The brief cycle of life of the flowers thriving in these vases symbolizes the fleeting existence of our reality. Seven concrete cylinders were collected around construction sites and each one underwent different experimentations and transformations and complemented with a variety of materials. Each piece has her own story and only knows how to carry a flower her own way. Materials: concrete cylinders (collected from construction sites), brass, walnut wood, textile, wicker, glass.

DIRECTOR

PAOLA SAKR

-

Sayde Street

Ashrafieh, Beirut

LEBANON

-

T + 961 5 457 742

M + 961 3 222 156

-

info@paolasakr.design

paola@paolasakr.design

www.paolasakr.design



RALNAS

S7 |

What started as an unknown hobby playing with resin, an activity that stemmed from Ralph's architectural and interior background, suddenly became an incredible artistic journey for the self-taught artist. His pieces, which have now become a form of escape for him, are made mostly from scratch whereby all materials are picked and put together by hand, making the act of creation a true act of art. After investing in this form of art for a year now, Ralph estimates the completion of one piece from 5 to 15 days, depending on the size and details. His approach to his work is free flowing and intuitive, a process that involves a complex layering of colors and textures that create an illusion of multiple coatings and proportions. The end result is a powerful reflection of the inspiration he gathers from the beauty he sees in the world around him and the majestic shapes of our planet Earth.

DIRECTOR

RALF NASSIF

-

Edde Jbeil, Kornit Chahwan

Mount Lebanon

LEBANON

-

M + 961 70 914 908

-

ralph@nassif.me



RALPH METNI

S8 |

Ralph Metni is a Beirut based product designer that graduated from ALBA with honors. He will finally complete his studies in Milan, with a masters in industrial design in 2018. Ultimately, Ralph intends to return to Lebanon and launch his career by designing lines of his very own products.

About PICO : Music is a truly unique experience. It is a powerful way to support your well-being and your brain loves it. What's even better for your brain is to create music. Unfortunately, instruments aren't accessible to everyone, and some require years and years of practice, so music beginners are struggling to pick up an instrument. It's time to learn to play a tune! PICO is a four hole Ocarina designed for music beginners. Made out of recycled pieces of marble that would have otherwise been discarded. Its design makes it a durable, ergonomic and exclusive product. Each piece is unique thanks to the marble's veins. The included leather pouch will let you take PICO wherever you go. A beginner's instrument, in the palm of your hand!

DIRECTOR

RALPH METNI

-

Mar Takla

Hazmieh, Beirut

LEBANON

-

T + 961 5 952 829

M + 961 3 352 582

-

rmetni@gmail.com

facebook.com/ralph.metni



RAMY BOUTROS DESIGN

D2 |

RAMY BOUTROS DESIGN is an interior architecture and design firm based in Beirut and founded by Ramy Boutros. The firm's philosophy is to mold its clients' dreams and desires into architecture. Ramy Boutros has mastered the art of sculpting optimal spaces into esthetic interiors that embed the essence of each client's identity. His bespoke creations blend luxurious materials with impeccable craftsmanship and are ultimately designed to stimulate and, quite often, provoke. Effortlessly flying over centuries and combining unexpected styles must be one of Ramy Boutros's top signatures. His avid lust for Art and Beauty has allowed him to develop an authentic, eccentric vision that aims to capture the soul of every client. This table was designed to resemble the geologic formations of Mother Nature, also known as earth's «Strata». In fact, much like various rock layers compose our continents, MDF layers were shaped and piled to create this table. Ramy Boutros's intention was to give his piece an «untreated», raw quality, as if it were a sedimentary rock sculpted by Air, and eroded by Water.

DIRECTOR

RAMY BOUTROS

-

Abdl El Hadi Street

Villa Selim Mouzannar - 2nd floor

Ashrafieh, Beirut

LEBANON

-

T + 961 01 333 451

-

ramy.b@ramyboutros.com

www.ramyboutros.com



RENDER DESIGN RESIDENCY

S5 |

JOY MARDINI DESIGN GALLERY in association with BEIRUT ART RESIDENCY have launched the inaugural edition of the Render Design Residency in Beirut. Two international designers, Francesco Pace and Anne-Claire Hostequin, were selected to participate in the residency and inquire into the Beirut design scene. For the duration of two months the residents worked on conceiving a collection of products and the outcome of their creative journey was showcased at BEIRUT ART RESIDENCY's Open Studios. The initiative also aims to foster dialogue between resident designers and local designers that are represented by JOY MARDINI DESIGN GALLERY. Based on their individual proposals and practice the residents were paired with Marc Baroud and Carla Baz. The designers were invited as mentors, providing further insights into local craftsmanship, key players in the design market and industry know-how.

DIRECTORS

JOY MARDINI & AMAR ZAHR

-

373 Pasteur St Chemali bldg

Beirut

LEBANON

-

T + 961 71 347 540

M + 961 81 758556

-

info@beirutartresidency.com

hi@jmdesigngallery.com

www.beirutartresidency.com

www.jmdesigngallery.com



SAHAR BIZRI DESIGNS

D14 |

Sahar Bizri is a Lebanese interior architect based in Beirut. For over 15 years, she was commissioned to design a multitude of interiors. In 2014 she co-established KNOCK DESIGN, a furniture line. In 2017 she started her own production line, SAHAR BIZRI DESIGNS introducing functional furniture pieces that combine innovative mechanics and contemporary design. Her finesse designs bring together : a contemporary aesthetics marked by clean smooth lines with soft edges merge with unique yet functional mechanical movements.

DIRECTOR

SAHAR BIZRI

-

Verdun, Beirut

LEBANON

-

T + 961 79 163 999

M + 961 3 864 260

-

saharbizri.designs@gmail.com

www.saharbizri.com



SANDY LYEN

D14 |

Designer and woodworker, Sandy designs and makes her own furniture. Reclaimed wood, patchwork and puzzles are a main touch in her work, a combination that makes her work unique. For Beirut Design Fair, Sandy is showcasing a unique dining table, a perfect example of the patchwork technique and style of work that she usually create. The table has elegant and modern legs with a colorful top using more than 5 types of reclaimed wood. This table showing the beautiful imperfections of wood that the modern wood workmanship tries to hide it behind minimum knots and lines. The Wood was collected from wood shops around Beirut, left behind furniture and scraps. Treated, cleaned and customized to fit the design made around them. Working with minimum tools makes the piece handcrafted with a personal touch.

DIRECTOR

SANDY LYEN

-

Dekwaneh Industrial City

Beirut

LEBANON

-

M + 961 70 366 641

-

Lyensandy@gmail.com

instagram@sandylyen



SOURAYA HADDAD-CRÉDOZ

S4 |

Souraya Haddad Crédoz is a diplomed architect. After working for two years in a renowned landscape company in Canada and being the personal assistant of the landscape architect : Jan Hodeman & Ass. She went back to « Université de Montréal ». She now owns a master degree in landscape design. She's now focusing on organic, sustainability, but with her care for poetry and sensitive things. She has been working close to the vegetal, planting and gardening in various environments and organizations such as S. Barone & F. Oemischen's landscape workshop. She was living in Istanbul, where she ran a ceramic workshop and gave Qi-Gong lessons. Today, she is running her own ceramic workshop in Beirut. She exhibited her artworks at « Tanit Gallery » in Mar Mikhael, as well at « Zawal Gallery » in collaboration with « Barbu » a French illustrator. She designs unique pieces.

DIRECTOR

SOURAYA HADDAD-CRÉDOZ

-

Street 40, Sector 2

Mkalles Industrial City

Beirut

LEBANON

-

M + 961 76 132 875

-

souraya.hacre@gmail.com



STARCH FOUNDATION

S21 |

Founded by Rabih Kayrouz, Tala Hajjar and in collaboration with Solidere, STARCH is a non-profit organization that helps launch Lebanese emerging designers. It is an annual program and a rotation of debut collections where emerging designers and an architect are selected each year. The collections are presented for a period of one year at the STARCH boutique. Stephanie Sayar & Charbel Gharibeh, have been part of Starch team 2016. Their approach to design encompasses their personal vision of experimental designs with a dash of humor using new materials and forms. They recently opened their studio Sayar & Garibeh, after developing their product design skills and exhibiting their work at a number of international fairs. They will be showcasing Droop lamp, a table lamp that reflects a fusion between different materials to create a minimalist design. A combination of hand blown glass bulb, with a brass base, merged and blended with a geometrical marble block. The lamp is currently part of OTC editions.

DIRECTORS

RABIH KAYROUZ & TALA HAJJAR

-

1051 Quartier des Arts - Saifi Village

Beirut

LEBANON

-

T + 961 1 566 079

F + 961 1 566 079

-

tala@starchfoundation.org

www.starchfoundation.org



STUDIO A

C7 |

STUDIO A by Ahmad Bazazo is a newly founded multidisciplinary design practice based in Beirut, Lebanon, a city which has played a key role in establishing a design hub for the Middle East. The studio, which focuses on the creation of unique spaces and pieces, is highly influenced by the specificity of its locale, at the crossroads where east meets west. It challenges the notions of traditional design by pushing the boundaries of material experimentation and precision in order to create objects of the highest possible quality. By having a complete understanding of the past, while applying modern materials and techniques of fabrication, new pieces are conceived with a sense of timelessness that surpasses that of fast-paced design and current trends. STUDIO A does not confine itself to a given stylistic approach, but rather is driven by an aim and principal of producing bespoke, made-to-measure objects that bring light and focus into the spaces that they encompass.

DIRECTOR

AHMAD BAZAZO

-

Roma Street, Wardieh Square

Al Montada Building - 6th floor

Beirut

LEBANON

-

T + 961 1 377 038

M + 961 3 369 900

-

info@studio-a-designs.com

www.studio-a-designs.com



TAREK EL KASSOUF

S15 |

Tarek Elkassouf is a designer based between Beirut and Sydney who creates in three disciplines : Architecture, Urban Planning and Product/Furniture Design. His work is inspired by geometric patterns and is often spliced with futuristic parametric design. Tarek has been working as an Architect and Urban Planner since 2005 ; on projects that range from landmarks to developing cities. He has received many awards in international competitions in both fields. He began refining his third passion, furniture design in 2014 with the launch of «The Edge» series of furniture and lighting. His geometric products are considered to be « functional-sculptural pieces ». Tarek was awarded the Silver A' Design Award in the Young Design Category for The Edge - Beirut in 2015. Two of his works from the series, The Twisted Diamond Lamp and The Dark Edge Table were also awarded a Bronze A' Design Award and an A' Design Award respectively.

DIRECTOR

TAREK EL KASSOUF

-

Beirut

LEBANON

-

Sydney

AUSTRALIA

-

M + 961 3 491 163

M + 61 411 871 375 (AUSTRALIA)

-

contact@tarekelkassouf.com

www.tarekelkassouf.com



TOUFIC MATTA

S25 |

Toufic Matta is an architect and budding product designer, born in 1986 in Lebanon. Raised in a family of craftsman, painter mother, coachbuilder/restorer father, and shoemaker grandfather, he had a leaning to automotive and industrial design since an early age. Participated in a number of automotive design competitions and mentions from 2001 to 2004 with Peugeot PSA. Graduated with a masters degree in architecture from the University of the Holy Spirit in 2011. Awarded from Domus Academy Milan for his final year project, and rewarded with a scholarship for Urban design. Working in multiple architectural services fields, banking, petroleum, industrial and residential, in Lebanon and the Middle East, since 2011, with a number of experimental projects. Collaborating with Beirut Makers since March 2017, he exhibited with the collaborative in the latest Beirut Design Week. Presented work received a prize from Recycle Beirut.

DIRECTOR

TOUFIC MATTA

-

Old Souk

Jounieh

LEBANON

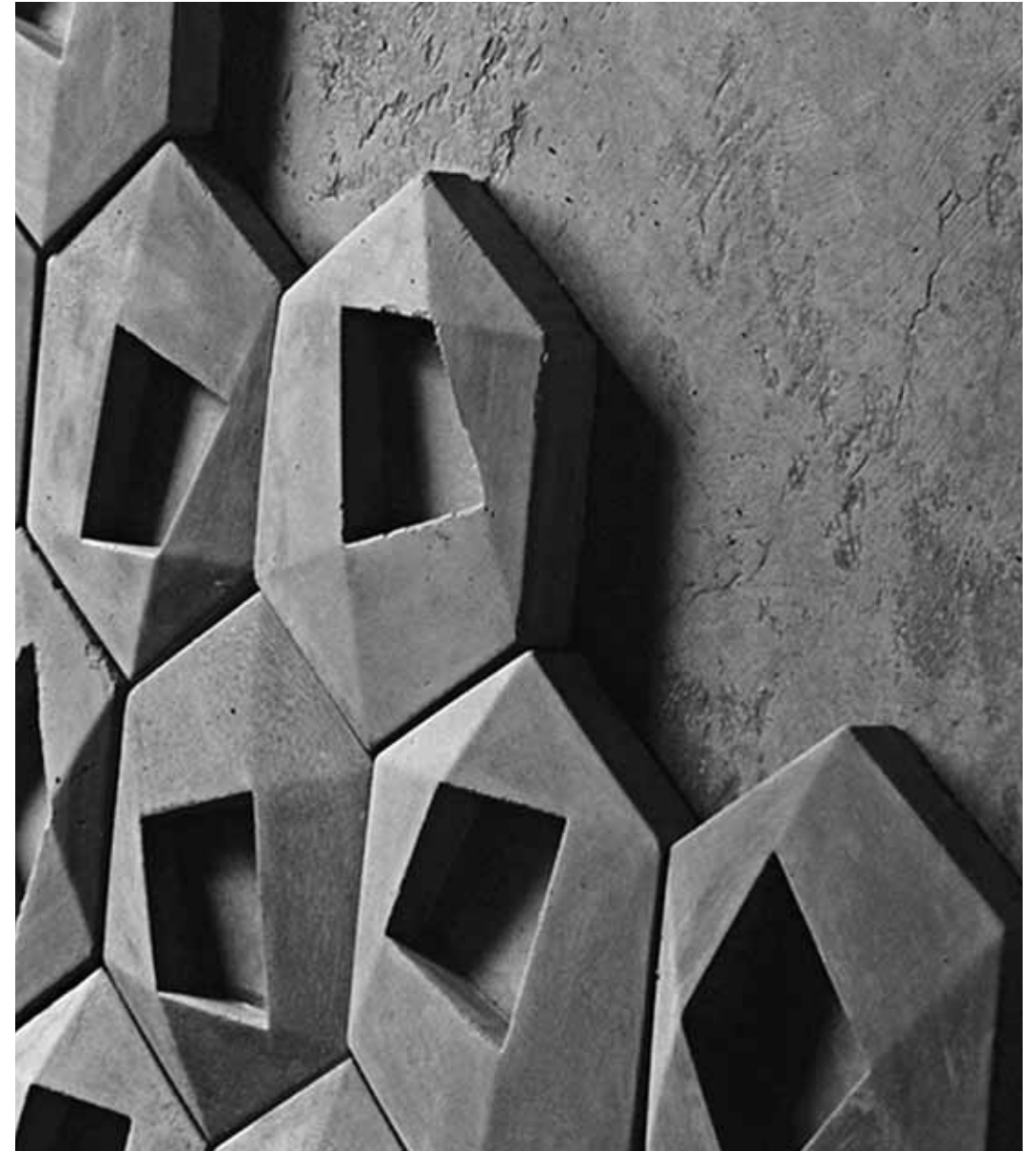
-

M + 961 70 177 599

-

mtoufic@gmail.com

instagram@toofiomatta



WALID SFEIR

S16 |

Walid Sfeir began his own design company in 1995. Prior to that he had worked for five years with an international design firm based in UK and specialized in Hotel designs. Back in Beirut, he opened his design firm and, projects soon emerged. Starting with small projects the company expanded to take on different types of projects, from private residential interiors to public and commercial spaces within MENA region & Europe. In 2006 his sister Gina joined him after several years of work in Paris, where she gained a significant experience in antique, furniture and fabrics. Walid has a particular interest for furniture design, and throughout his projects he has designed a myriad of unique pieces which rendered the designed interior a particular functional and unique atmosphere. He has designed pieces that matches all styles of architecture, and is passionate about mixing different materials, to achieve a simple modern, yet creative design with a vintage inspiration.

DIRECTOR

WALID SFEIR

-

Gouraud street - Jesuit building

Po. Box : 16-5370

Gemmayze, Beirut

LEBANON

-

T + 961 1 566 866

-

mailbox@walidsfeir.com

www.walidsfeir.com





-

HOT SPOTS

-

BITS TO ATOMS

D10 |

BITS TO ATOMS, is the largest prototyping house in Lebanon. Ahead in the fields of Industrial 3D printing and 7 axis CNC, BITS TO ATOMS' extended experience in manufacturing makes it the best platform to get both R&D and Industrial Design services combined with Rapid Manufacturing to create and develop your product. BIG VOXEL is the fruit of BITS TO ATOMS continuous researches. This large revolutionizing 3D printer, not only proves that such technology can be done in Lebanon, but also opens new possibilities, based on recycled plastics, for the creative industry. BIG VOXEL can print objects as big as 1.5 x 0.8 x 1.8 m (X, Y, Z), with a resolution of 2 mm and a precision of 0.2 mm. With a 3D print speed above 100 mm / s, it can 3D print a full chair in about 6 hours.

An auction sale of 3D printed chairs (5 copies, limited edition, printed during the Fair) by designer Guillaume Credoiz is organized September, Sunday 24th at 6:30 pm in the Conference Room (Beirut Design Fair, Hall 3, BIEL)

DIRECTOR

GUILLAUME CRÉDOZ

-

Building 45, Street 40, Sector 2

Mkalles Industrial City

Beirut

LEBANON

-

T + 961 1 965 517

-

contact@bitstoatoms.info

www.bitstoatoms.info



THE BANQUET/RITAGE by MAROUN CHEDID

D12 |

Dubbed the jeweler of Lebanese Mediterranean cuisine, with over 25 years of experience, Maroun Chedid combines the authenticity of Lebanese cooking with the joie de vivre of modern living. October 2017 marks a new milestone for the Chef, as the MAROUN CHEDID COOKING ACADEMY and RITAGE BY MAROUN CHEDID, Contemporary Lebanese-Mediterranean Cuisine are set to open in the heart of Beirut. RITAGE is the flagship of the Chef's culinary journey, denoting heritage and authenticity. «Door» in Arabic, it is the entrance to the colorful world of Maroun Chedid: A Mediterranean wonderland filled with flavor, passion and aesthetic. THE COOKING ACADEMY reflects a unique lifestyle welcoming all passionate foodies, aspiring chefs, and professionals. The modern space has state of the art space and user-friendly equipment, allowing students to experience the joys of cooking while learning about international and Lebanese-Mediterranean cuisines, terroir products, new techniques and know-how from highly experienced chefs.

DIRECTOR

MAROUN CHEDID

-

Ritage by Maroun Chedid
Cooking Academy - Tabet Palace
Rue du Liban - Saifi Village
Ashrafieh, Beirut

LEBANON

-

T + 961 1 323 084

T + 961 1 323 085

-

contact@marounchedid.com

www.marounchedid.com



THE BANQUET/ YEW STUDIO

D12 |

Bespoke and Unique Pieces of Furniture! YEW specializes in designing and building one-of-one collectible pieces of furniture. The company's vision is to ensure all its creations are distinctive and bespoke, giving value to the owner's individuality. Through our masterly craftsmanship we ensure owners enjoy their unique creations across generations. The YEW banquet table that will be showcased at Beirut Design Fair, is made from a rare single piece of Kauri solid wood, with eight cylindrical steel legs. The Kauri (Agathis Australis) was preserved under the soil surface in New Zealand for 50,000 years, right around the end of the last ice age era. Well preserved in the mud and with no oxygen, this naturally felled forest was perfectly preserved as timber. This phenomenon makes this table the oldest workable wood in the world. Other than its gigantic size of eight meters length by two meters width, this table showcases an exceptional beauty phenomenon. Due to the resin aging process in this environment, the natural color of the surface is a stunning and unique satin gold.

DIRECTOR & MANAGING PARTNER

RANI KIK

MARWAN KARAM

-

Beirut Port District

Beirut

LEBANON

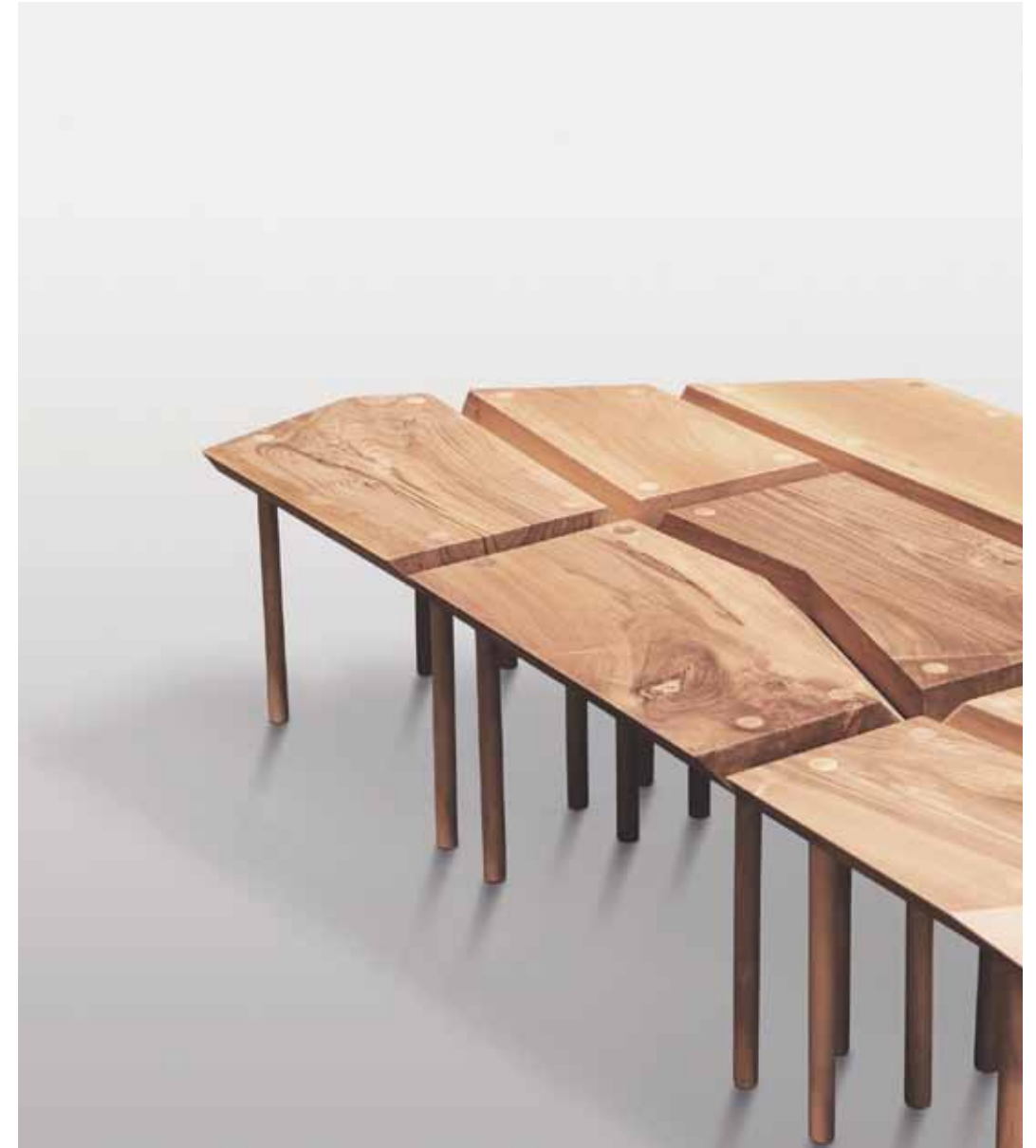
-

M + +961 3 503 191

-

info@yew.studio

www.yew.studio



BEIRUT DESIGNS

D7 |

BEIRUT DESIGNS is a Madar Onboz education and outreach program targeting Lebanese youth and educators. We choose design thinking because it demonstrates the possibilities of finding several solutions to a single problem; it dissects the process through which a solution is executed; it develops critical and imaginative thinking; and finally it is a great pedagogical tool that plays across art, culture, and science. BEIRUT DESIGNS selects a yearly theme for which a book, an object, a documentary film, a performance, a lecture, and a visual glossary are created. These are presented within an annual teaching module implemented in schools and universities across Lebanon. We partner with Beirut Design Fair as our launching platform, with Boisseliers du Rif, SS Silkscreen, 53 Dots, and Eid Printing Press as our makers, and the Ministries of Culture and Education as our facilitators.

DIRECTOR

NADINE TOUMA

-

Beirut

LEBANON

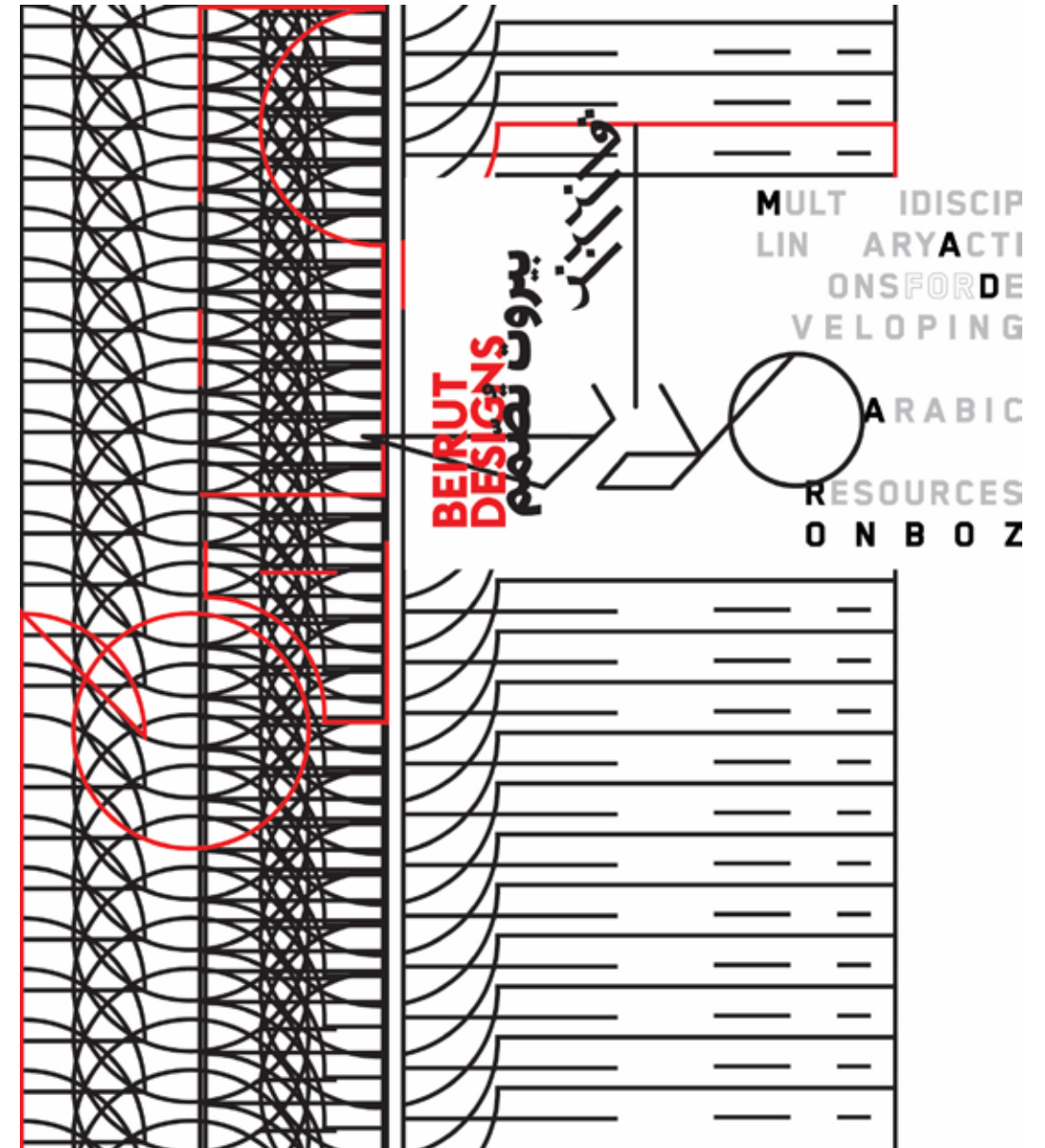
-

T + 9611 380 533

-

daronboz@gmail.com

www.madaronboz.org



THE GOOD THYMES

D9 |

THE GOOD THYMES is on a quest to bring back the most Lebanese of all saviors, zaatar, to the front line of modern cuisines. Its broad range of thyme-based mixes are either revisited long-forgotten recipes, or freshly imagined fusions, but all concocted to awaken a different memory that has been dearly dormant within. With the aim of producing grade A zaatar, the project started as a thyme farm in the unspoiled fertile mountains of southern Jezzine, and then became an expedition with the best chefs and specialists in Beirut, to create the finest dried herb mixes, seasoning spices and other zaatar-based products. By carrying out the process from field to shelf in its entirety, THE GOOD THYMES ensures the highest-quality of its organically-grown zaatar. It also guarantees that the thyme is blended with all-natural ingredients, free from artificial colors or flavors, additives or preservatives.

OWNER

FADY AZIZ

-

Kfarhouna, Jezzine

LEBANON

-

M + 961 70 010 410

-

fady@thegoodthymes.me

www.thegoodthymes.me





-

OUR PARTNERS

-

FOUNDING PARTNER



Creditbank S.A.L.

SME Financing

Every professional knows the old adage: where there's a will, there's a way.

We empower your will: Creditbank gives you the right resources to succeed. Our SME Financing program offers you tailor-made credit facilities as well as full advisory and consultancy services. If you have the craftsmanship, our advice and financial support provide you with the ideal “tools” to put the power in your willpower.

Willpower

01 501 600
creditbank.com



-

FAIR SUPPORTERS

-

BEIRUT
ART
FAIR

20/23 SEPT 2018

BEIRUT-ART-FAIR.COM

OFF THE WALL MUSIC

BeoSound Shape is a new wall-mounted wireless speaker system for design conscious music lovers. The solution delivers immersive sound staging, customisable and scalable designs, as well as integrated noise dampers for improved room acoustics.

DISCOVER HOW ON [BANG-OLUFSEN.COM/SHAPE](https://bang-olufsen.com/shape)



BEOSOUND SHAPE
BANG & OLUFSEN

LIKE NO ONE ELSE

Bang & Olufsen Beirut — T: 01 97 44 00



*My grandfather was a raw piece of wood.
Like wood, he was tough...
Unpolished, yet warm at the core.
And like wood, his legacy will live forever...*

OUR HERITAGE

Our story begins a little over 100 years ago, amidst the uncertainty of the First World War. Having discovered a deep respect for wood and a love for craftsmanship, Hanna El Rif, opens his first workshop. Years later, his son Joseph, sharing his father's passion for the craft, expands this workshop into the large family of Boisseliers we are today. For three generations now, we have strived to uphold the craft and its traditions by melding classic technique with state-of-the-art innovation, and always

channeling our passion in pursuit of perfection. Through our mastery of artisanal techniques and an ever-growing 4000m2 workshop, we have customized and developed a diverse body of work ranging from furniture and heirloom gifts, to complete woodwork refurbishments. As we continue to grow, our core values remain unchanged — as they have been over a century. Through experience, unsurpassed craftsmanship and exemplary service, we are committed to preserving the craft, keeping it relevant today and for generations to come.

Over the years, we are proud to have crafted warm and solid relationships with countless collaborators, partners and clients. From architects to leaders, individuals to companies, we are honored and humbled by their support and friendship. For us, every project completed through the years has been a great source of pride and an enduring reminder of the relationships we have forged and gratifying work that keeps us going. From furniture and accessories, to flooring and paneling, private homes to palaces, we look back with satisfaction and forward for the new adventures to come.

Boisseliers du Rif

Rif building, Dora, Seaside road
P.O.Box 80179, Beirut - Lebanon
info@boisseliersdurif.com
T +961 1 241 727/8/9
F +961 1 241 724
www.BoisseliersDuRif.com



“L'ARTISTE EST DE TOUS LES HOMMES,
CELUI QUI RESSEMBLE LE PLUS À DIEU”

“THE ARTIST IS, OF ALL HUMANKIND,
THE ONE WHO MOST RESEMBLES GOD.”

GUVDER

HUMAN ARTISTIC REFERENCE, LEBANESE ARMENIAN.

FOR A BRIGHT
LEBANON
AND LEBANESE
OF THE WORLD

VIP LOUNGE BY **HOMIE**
MAGAZINE



PHOTO BY MIKE CHAMNEH

FOLLOW US ON SOCIAL MEDIA





A LUXURIOUS STAY,
SURROUNDED BY OVER
500 ART PIECES

LE GRAY
BEIRUT



CAMPBELL
GRAY
HOTELS


THE LEADING HOTELS
OF THE WORLD®

Le Gray Martyrs' Square Beirut Central District Lebanon Tel +961 1 971 111 Fax +961 1 971 112
info@legray.com legray.com



Insurance
Consultants

Tel: +9611510222/333
+9613311297

Web: www.la16sal.me
E-mail: info@la16sal.com

MAISON & OBJET JAN. 19 — 23 2018 PARIS

19—23 JANVIER 2018
PARIS NORD VILLEPINTE
WWW.MAISON-OBJET.COM

LE RENDEZ-VOUS INTERNATIONAL DES PROFESSIONNELS
DE L'ART DE VIVRE, DE LA DÉCORATION D'INTÉRIEUR ET DU DESIGN
THE LEADING HOME DECOR FAIR CONNECTING THE INTERNATIONAL
INTERIOR DESIGN AND LIFESTYLE COMMUNITY



عرضاً، ندوةً، ومعجماً بصرياً!
موارد تكون وحدة تربوية تطبق
سنوياً في المدارس والجامعات
حول لبنان. شركاؤنا هم منصة
الإطلاق معرض بيروت للتصميم،
الصانعون بواسولييه دو ريف،
س.س. سيلكسكرين، عيد
برينتنيغ، 53 دوتس، والمؤيدون
وزارات الثقافة والتربية.

مُحرّك ومُفعّل تربوي مُتعدّد المحاور، مُطوّر لموارد عربية.



بيروت تصمم من مدار قنبر،
برنامج تربوي وثقافي يتوجّه
للشباب والتربويين في لبنان.
اخترنا التفكير التصميمي لأنه
يجسّد احتمالات إيجاد عدة
حلول لمشكلة واحدة؛ يشجّع
ويرسم مسار تنفيذ الحل؛
ينمّي الحسّ النقدي والفكر
المتخيّل؛ وأخيراً هو أداة
بيداغوجيّة تتلاعب بين الفنون
والثقافة والعلوم. بيروت
تصمم تختار سنوياً محوراً
ينتج عنه كتاباً، شيئاً، فيلماً،

Almohtaraf has become more than the sum total of its many capabilities..

After more than three decades and a long list of remarkable achievements, Almohtaraf can proudly claim that it succeeded in fulfilling the dream it had set out to achieve from the outset, namely to leave a lasting impact on the design scene. As a pan arab design house, Almohtaraf was unique in its ability of putting together contemporary design skills, rich artistic and cultural faculties, together with a profound knowledge of our national heritage and aspirations.

35
years

follow our design series
of 8 on instagram

@mohtaraf

المختاراف
al mohtaraf

www.mohtaraf.com

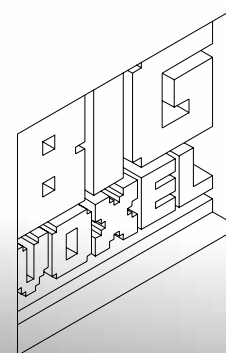


almohtaraf



@almohtaraf

MANUFACTURE ANYTHING, up to 3m²,
from affordable **RECYCLED PLASTICS!**



BITS^{TO}ATOMS

BIG VOXEL, the giant 3Dprinter:
Tool of next Industrial Revolution!

www.BitstoAtoms.info Mkalles Industrial City, Beirut, Lebanon. 00961 1 695 517




marounchedid
• COOKING ACADEMY •

COOKING CLASSES FOR FOODIES, ASPIRING CHEFS & PROFESSIONALS.
T. +961-1-323085 / EMAIL: ACADEMY@MAROUNCHEDID.COM / WWW.MAROUNCHEDID.COM




—
REVEALING THE TIMELESS BEAUTY
OF MASTER TREES®
—

YEW
distinct wood

BEIRUT
M : +961 3 503 191 | @yew.studio
info@yew.studio | www.yew.studio

Uber designs your trip!

Download the app for a faster way to get around.



UBER

-

MEDIA PARTNERS

-

AD
MIDDLE
EAST
ARCHITECTURAL DIGEST

THE MIDDLE EAST'S
DESIGN AUTHORITY

ARCHITECTURAL DIGEST • GENIUS DESIGNS • INSPIRING ART • LUXURIOUS HOMES

DÉCOUVRIR BEYROUTH CÔTÉ CULTURE

#AGENDACULTUREL



agenda
culture

WWW.AGENDACULTUREL.COM

f AGENDACULTURELLB

t CULTURALAGENDA

i CULTURALAGENDA



**THE URBAN GUIDE TO THE
MIDDLE EAST AND NORTH AFRICA**

Subscribe at
brownbook.tv

FACEBOOK
[brownbookmagazine](https://www.facebook.com/brownbookmagazine)

INSTAGRAM
[brownbook](https://www.instagram.com/brownbook)

TWITTER
[@_brownbook](https://twitter.com/_brownbook)



LE MAGAZINE D'ARCHITECTURE ET DE DÉCORATION TRIMESTRIEL

DECOVENTURE

ALL ABOUT DECO, ART AND ADVENTURE



GEORGES ABOU CHABKE

Beirut based interior architect and art director. Holder of a Master's Degree in Interior Architecture from USEK University with high distinction and ranked on top of the 2012 promotion, Georges had since then the opportunity to achieve a wide range of projects from designing residential and commercial areas to creating and executing set designs for media and for various events.

Beside implementing local and international projects with renowned clients and remarkable designers, he decided to create his own design platform: DECOVENTURE.com the blog through which he shares out loud his passion for deco as well as his inspiration and the highlights of his trips along with a venture into new and different culture facets.

georges@decoventure.com

www.decoventure.com

www.decoventure.com

decoventure.com is a digital blogging platform dedicated for the deco and art lovers : a venture in the world of architecture, interior and all different trends...

Sharing innovative tips and tricks that make your life much easier and discovering remarkable spots in Lebanon and all around the globe. This space highlights the latest news and vogue in the world of deco as well as share helpful creative Do-it-Yourself ideas. Stay connected to the venture on the blog and social media links.

venture

subscribe



@decoventure





Le magazine numéro 1 de la déco dans le monde



PARTNERS OF BEIRUT ART FAIR
www.executive-magazine.com

Executive

Harpers BAZAAR INTERIORS

FASHION | BEAUTY | PEOPLE | LIFESTYLE | ART | INTERIORS | BRIDE | JUNIOR

ART OF DESIGN

KOA, a unique architectural concept for enlightened residential living in Dubai, has collaborated with Cuadro Art Gallery. In an exclusive video, Emirati artist Zeinab Al Hashemi guides us through the exhibition.



SEOUL SENSATION

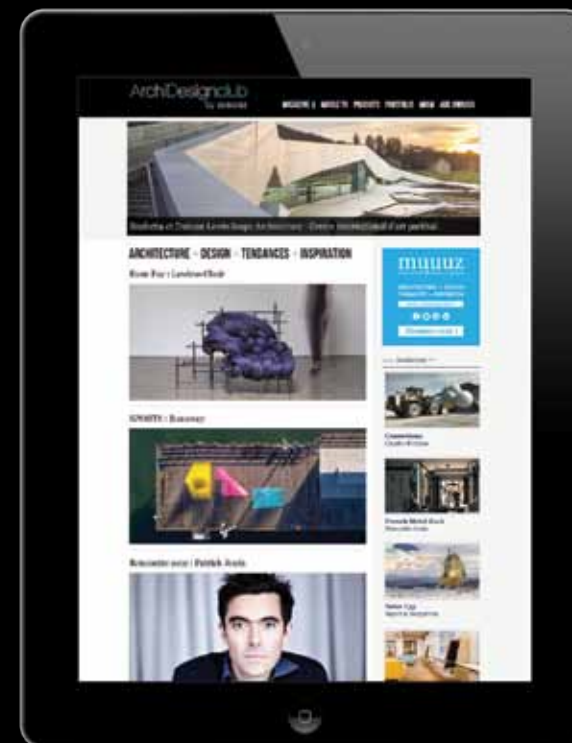
INTERIORS/DESIGN Fashion brand COS joins forces with New York studio Snarkitecture to create a playful installation featuring thousands of glass marbles all in one room. On view in Seoul's Gana Art Centre from 8-19 November.



ITALIAN ALLURE

INTERIORS/DESIGN
Meet Alberto Vignatelli, founder of Luxury Living Group, one of the world's largest furniture companies. He speaks to us about the essence of the 'Made in Italy' mark and the group's diverse portfolio of brands, including Fendi Casa and Bentley Home, known for their rich craftsmanship and heritage.

muuuz
architecture & design magazine



www.archidesignclub.com

HarpersBazaarArabia.com/Interiors

Newsletter la plus lue par les architectes d'intérieur et les professionnels de la décoration (source étude Archiliste 2016)

SELECTIONS

&

ART PAPER



Arts, style, and culture magazine from the Arab world and beyond

AVAILABLE ACROSS THE MENA REGION

selectionsarts.com
citynewspublishing.com
facebook.com/selectionsarts
instagram.com/selectionsarts





-
**THANK
YOU**
-

BEIRUT ART FAIR Team : Laure d’Hauteville | Pascal Odille | Marine Bougaran | Agnès Miquel ||
 Dany Abboud | Habib Abdallah | Ziad Abi Chaker | Samer Abillama | Tony Akil | Yasser Akkaoui | Serge Akil | Samer Al Ameen | ALMAPAU | Véronique Aulagnon | Georges Amatoury | Amman Design Week
 | Rony Arraygi | Aline Asmar d’Amman | Stéphane Attali | Fabienne Attallah Kanaan | Marie-Noëlle Azar Long | Anwar Azzi | Francois Bacha | Patricia Barakat | Saleh Barakat | Marc Baroud | Joe Barza | Nayla Bassili | Carla Baz | Majd Bazergi | Nabil Bazergi | Marco Benveniste | Rana Beiruti | Sahar Bizri | Ramy Boutros | Marianne Brabant | Philippe Brocart | Angélique El Morabit-Bolter | Jean-Marc Bonfils | Jessy Bustros | Karim Chaaya | Maguy Chaaya | Elie Chaker | Celine Chami | Maroun Chedid | Farid Chehab | Karen Chekerdjian | Joanna Chevalier | Bénédicte Colpin | Edoardo Crisafulli | Guillaume Cuiry | Jack Dabaghian | Tamima Dahdah | Basel Dalloul | David & Nicolas | Cesar Debbas | Nabil & Zoe Debs | Nada Debs | Martin Desprez | Philippe Dubois | Joe El Alam | Jean Pierre El Asmar | Odile El Khoury | Khaled El Mays | Najla El Zein | Guillaume Excoffier | EXPLOSURE Team | Raya Farhat | FARRA | Wael Farran | Elias Fayad | Philippe Fouchard-Filippi | Josyane Franc | Nayef Francis | Galerie XX^{ème} Siècle | Adrien Gardère | Gregory Gasterelia | Cecile Geammal | Dr. Fady Gemayel | Lucien George | Ghaith & Jad | Pierre Ghattas | Lina Ghotmeh | Gordon Gray | Emmanuel Guiragossian | Sabine Habibian | Mark Hachem | Samar Haddad | Tala Hajjar | Souheil & Hala Hanna | Carl Harfouche | Nassim Hasbani | Kameel Hawa | Karine Jabaji | Zaza Jabre | Rabih Jouedi | Charbel Kahhale | Martin Kanaan | Rabih Kayrouz | Joy Kerlakian | Naila Kettaneh | Tarek & Myrna Khalifé | Bernard Khoury | Rani Kik | Rafif Kobeissi Berro | Eric Lebas | François Leblanc Di Cicilia | Anna Loporcaro | Frank Luca | Dina Maalouf Katrib | Cherine Magrabi Tayeb | India Mahdavi | Galal Mahmoud | Joy Mardini | Ziad Matta | Maya Metni | Rajesh Mittal | Georges Mohasseb | Cedric Morisset | Wael Mouawad | Wissam Moubarak | Elias Moubarak | Michel et Philomene Moubarak | Roger Moukarzel | Emne Mroue | Marie Munier | René & Lucia de Murard | François Nader | Karim Nader | Serge Najjar | Cyrille Najjar | Rana Nasr | Rima Nasser | Rania Naufal | Wissem Noochi | Riad Obegi | Rodolphe Ojeil | Mathias Orhel | Matteo Origoni | Jacques Ouais | Francesco Pirello | Vincent Poinas | Hania Rayess | Andrée Riachi | Jean & Josiane Riachi | David Richiuso | Jean-Marc & Zeina Rif | Olivier de Rincquesen | Joumana Rizk | Sandy Saad | Rita Saad | Fadi Sabbagha | Chrystyna Salam | Dany Salameh | Tania Samaha | Fadi Saredidine | Megane Servadio | Petrina Shortt | Elsie Sikias | Nagy Sourati | Squad Design | Nathalie Stanek | Manuel Stanislas | Starch Foundation | Celine Stephan | Karina Sukkar | Yasmine Taan | Rania Tabbara | Alya Tannous | Camille Tarazi | Guy & Gin Taslé d’Héliand | Jean-Philippe Taslé d’Héliand | Christiane Tawil | Mattia Tebasti | Lynn Tehini | Clémentine Terramorzi | Nadine Touma | Doreen Toutikian | Katya Traboulsi | Vicken Vanlian | Giulio Vinaccia | Pascale Wakim | Mariana Wehbe | Richard Yasmine | Olivia Yassudo Faria | Elise Younes | Joseph Zaarour | Celine Zalloum | Paul Zgheib

FOUNDING PARTNER



PARTNER INSTITUTIONS



FAIR SUPPORTERS



MEDIA PARTNERS



THE TEAM


GUILLAUME TASLÉ D'HÉLIAND
Founder & Fair Director
gth@beirut-design-fair.com
HALA MOUBARAK
Co-Founder & Head of Exhibitors Relations
hmbk@beirut-design-fair.com
BÉNÉDICTE COLPIN
Special Advisor / Lightboard - Paris
benedicte.colpin@lightboard-paris.com
VINCENT POINAS
3D Illustator & Graphic Designer
readytobepublished@yahoo.fr
AGNÈS MIQUEL
Technical Manager
technical@beirut-design-fair.com
YASSER AKKAOUI
Strategy Advisor
ANWAR AZZI
Photographer
anwar.azzi@gmail.com
JOUMANA RIZK
PR Liban & Moyen-Orient
MIRROS COMMUNICATIONS

T + 961 1 49 74 94

joumana@mirrosme.com
PHILIPPE FOUCHARD FILIPPI
& RAJESH MITTAL
PR Europe, Amérique & Asie
FOUCHARD FILIPPI COMMUNICATIONS

T + 33 1 53 28 87 53

phff@fouchardfilippi.com
rmittal@fouchardfilippi.com

INFORMATION


OPENING HOURS
PROFESSIONAL PREVIEW & OPENING

Wednesday, September 20th, 2017

6.00 pm to 10.00 pm

by invitation only
PUBLIC DAYS

Thursday, September 21st, 2017

3.30 pm to 9.30 pm

Friday, September 22nd, 2017

3.30 pm to 9.30 pm

Saturday, September 23rd, 2017

3.30 pm to 9.30 pm

Sunday, September 24th, 2017

3.30 pm to 9.30 pm

VENUE
BIEL (BEIRUT INTERNATIONAL EXHIBITION & LEISURE CENTER)

Down Town, Beirut,

Lebanon

T + 961 1 99 55 55

info@beirut-design-fair.com
BEIRUT DESIGN FAIR

C/O Serge Najjar Law Firm

11 Madrassat el-Salam Street

Immeuble Samaha II - 3rd Floor

Ashrafieh, Beirut

LEBANON

www.beirut-design-fair.com
[@BeirutDesignFair](https://www.facebook.com/BeirutDesignFair)
[www.instagram/beirutdesignfair](https://www.instagram.com/beirutdesignfair)

READY FOR 2018 -

*by Bénédicte Colpin, Special advisor
for Beirut Design Fair*

A unique creative scene, a thriving spirit of entrepreneurship, a cosmopolitan hub, a network of exceptional craftsmanship: those are all the assets revealed by Beirut Design Fair. An incredible energy comes from Beirut. At the crossroad between East and West, the capital of the Land of Cedars holds a central position for its cosmopolitan culture. Famous for its art of living, Beirut has been spreading its creativity all over the world for many years. Creativity arises from

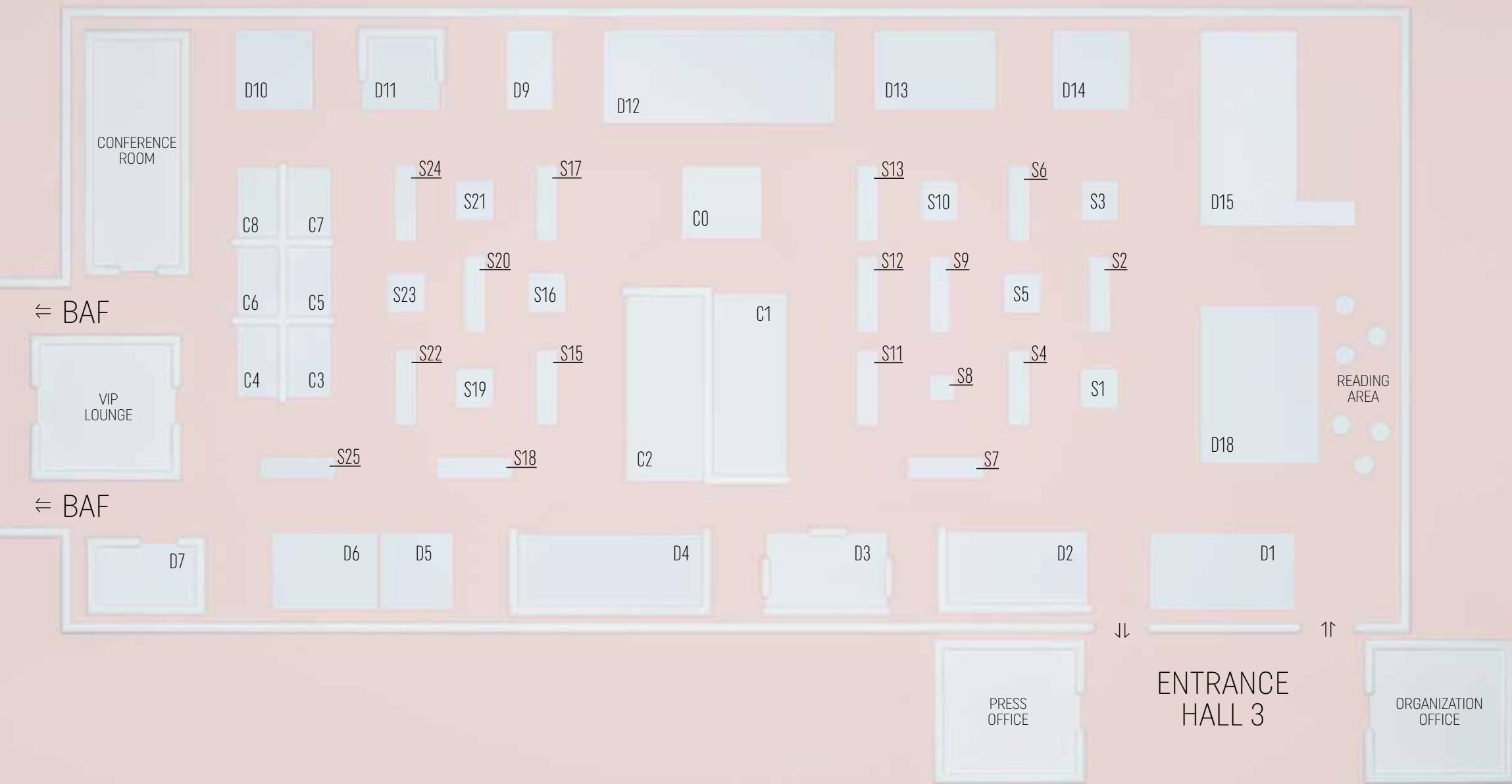
cultural exchanges, from a feeling of emergency, from entrepreneurship, and a quest of beauty and sense. Beirut is the perfect place for such an ambition. Its international outreach comes from its unique state of mind and its ambassadors from all over the world. Countless projects give à global exposure to an attentive audience, eager for creativity, beauty and innovation.

Beirut Design Fair is setting the tone and now starts the exploration of a fertile territory.

2nd EDITION - BEIRUT DESIGN FAIR

-
19/23
SEPTEMBER
2018
-

WWW.BEIRUT-DESIGN-FAIR.COM



VISA Signature

The Signature of All Exclusive Privileges



Welcome new possibilities and choose to complement your lifestyle with Creditbank Visa Signature debit card. Enjoy an array of exclusive privileges and preferential services including unlimited access to over 650 airport lounges worldwide through LoungeKey and free travel insurance. Benefit from 24/7 global emergency assistance and take advantage of a wide range of offers and promotions at home and overseas using Visa Explore App.

EXHIBITORS 2017

18	392RMEIL393	C6	62	JOY MARDINI DESIGN GALLERY	C1
20	ALBA	S11	64	KARINA SUKAR STORE	D1
22	ALBI	S2	66	MAD ARCHITECTURE & DESIGN	S23
24	AMBIENTE BEYROUTH	D5	68	MAISON TARAZI	C0
26	ANASTASIA NYSTEN	S6	70	MARIE MUNIER	D3
28	ARCHITECTURE & MÉCANISMES	S17	72	MARINE BUSTROS	S19
30	ARDECO	D13	74	NADA RIZK	S18
32	BEIRUT MAKERS	D11	76	NAMIKA ATELIER	C4
34	BOISSELIERS DU RIF	D6	78	OPUS MAGNUM GALLERY	S9
36	BRUT	S10	80	PAOLA SAKR	S20
38	CARWAN GALLERY	C2	82	RALNAS	S7
40	D-TAB	C8	84	RALPH METNI	S8
42	DAMJ DESIGN	S13	86	RAMY BOUTROS DESIGN	D2
44	DECO-AID	S24	88	RENDER DESIGN RESIDENCY	S5
46	ELIEMETNI	S1	90	SAHAR BIZRI DESIGN	D14
48	FABRACA	S22	92	SANDY LYEN	S3
50	FADI SARIEDDINE DESIGN STUDIO	C5	94	SOURAYA HADDAD-CREDOZ	S4
52	FARES HABER/FRS	S12	96	STARCH FOUNDATION	S21
54	GALERIE PIERRE GHATTAS	D4	98	STUDIO A	C7
56	HAWINI	D17	100	TAREK EL KASSOUF	S15
58	HICHAM GHANDOUR	C3	102	TOUFIC MATTA	S25
60	IWAN MAK TABI	D16	104	WALID SFEIR	S16

HOT SPOTS

108	BITS TO ATOM	D10
110	THE BANQUET/ RITAGE by MAROUN CHEDID	D12
112	THE BANQUET/YEW STUDIO	D12
114	BEIRUT DESIGNS	D7
116	THE GOOD THYMES	D9

WWW.BEIRUT-DESIGN-FAIR.COM

